

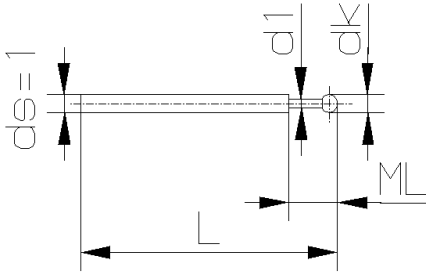
STYLI and ACCESSORIES



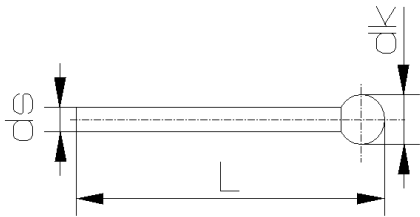
TASTER FÜR Gear Measurement

Stylus FOR Gear Measurement

Ohne Anschluss-Gewinde / Without thread	Bestell-Nr. Order No.	Gewicht Weight	dk mm	d1 mm	L mm	ML mm
Taststifte (Typ F) / Styli (Type F) Kugel: Rubin / Ball: Ruby Schaft: HM / Shaft: TC	0.2-15.2-1 NTF	0.2g	0.2	0.15	15.2	1.5
	0.25-15.3-1 NTF	0.2g	0.25	0.2	15.3	2.5
	0.3-15.3-1 NTF	0.2g	0.3	0.2	15.3	2.5
	0.4-15.4-1 NTF	0.2g	0.4	0.3	15.4	2.5
	0.5-15.5-1 NTF	0.2g	0.5	0.3	15.5	2.5
	0.6-15.6-1 NTF	0.2g	0.6	0.4	15.6	4.5
	0.7-15.7-1 NTF	0.2g	0.7	0.4	15.7	4.5
	0.8-15.8-1 NTF	0.2g	0.8	0.6	15.8	4.5
	0.9-15.9-1 NTF	0.2g	0.9	0.6	15.9	4.5
	1.0-16-1 NTF	0.2g	1.0	0.8	16.0	4.5



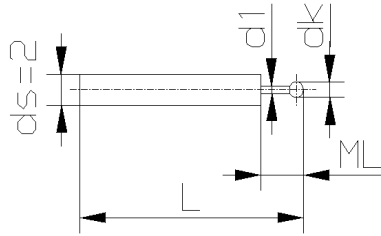
	Bestell-Nr. Order No.	Gewicht Weight	dk mm	ds mm	L mm
Taststifte (Typ N) / Styli (Type N) Kugel: Rubin / Ball: Ruby Schaft: HM / Shaft: TC	1.35-26.4-1 NTN	0.3g	1.35	1.0	26.4
	1.5-26.5-1 NTN	0.3g	1.5	1.0	26.5
	2.0-26-1 NTN	0.3g	2.0	1.0	26.0
	2.0-27-1.5 NTN	0.7g	2.0	1.5	27.0
	2.0-45-1 NTN	0.5g	2.0	1.0	45.0
	2.0-61-1 NTN	0.7g	2.0	1.0	61.0
	2.0-81-1 NTN	1.0g	2.0	1.0	81.0
	2.0-101-1 NTN	1.2g	2.0	1.0	101.0
	2.5-27.5-1.5 NTN	0.7g	2.5	1.5	27.5
	3.0-26.5-1.5 NTN	0.7g	3.0	1.5	26.5
	3.0-38-2 NTN	1.7g	3.0	2.0	38.0
	3.0-45-1.5 NTN	1.1g	3.0	1.5	45.0
	3.0-61.5-1.5 NTN	1.6g	3.0	1.5	61.5
	3.0-81.5-1.5 NTN	2.1g	3.0	1.5	81.5
	3.0-101.5-1.5 NTN	2.6g	3.0	1.5	101.5
	4.0-27-2 NTN	1.3g	4.0	2.0	27.0
	4.0-45-2 NTN	2.1g	4.0	2.0	45.0
	4.0-62-2 NTN	2.9g	4.0	2.0	62.0
	4.0-82-2 NTN	3.8g	4.0	2.0	82.0
	4.0-102-2 NTN	4.7g	4.0	2.0	102.0
	5.0-27.5-2 NTN	1.4g	5.0	2.0	27.5
	5.0-42.5-2 NTN	2.1g	5.0	2.0	45.0
	5.0-45-3 NTN	4.5g	5.0	3.0	45.0
	5.0-62.5-2 NTN	3.0g	5.0	2.0	62.5
	5.0-82.5-2 NTN	3.9g	5.0	2.0	82.5
	5.0-102.5-2 NTN	4.8g	5.0	2.0	102.5
	6.0-28-2 NTN	1.6g	6.0	2.0	28.0
	6.0-43-2 NTN	2.2g	6.0	2.0	43.0
	6.0-63-2 NTN	3.1g	6.0	2.0	63.0
	6.0-73-3 NTN	7.5g	6.0	3.0	73.0
	6.0-83-2 NTN	4.0g	6.0	2.0	83.0
	6.0-103-2 NTN	4.9g	6.0	2.0	103.0
	6.0-103-3 NTN	10.5g	6.0	3.0	103.0
	8.0-29-2 NTN	2.1g	8.0	2.0	29.0
	8.0-44-3 NTN	4.9g	8.0	3.0	44.0
	8.0-64-2 NTN	3.7g	8.0	2.0	64.0
	8.0-73-3 NTN	7.9g	8.0	3.0	73.0
	8.0-84-2 NTN	4.6g	8.0	2.0	84.0
	8.0-103-3 NTN	10.9g	8.0	3.0	103.0



Newton Metrology Systems

Mob : +91 73488 98009 / 73488 93121 mailto: info@newtonmetrology.in http:// www.newtonmetrology.in
 Dimensional measurement technology : Styli for coordinate measuring machines (CMM), machine tools, height gauges

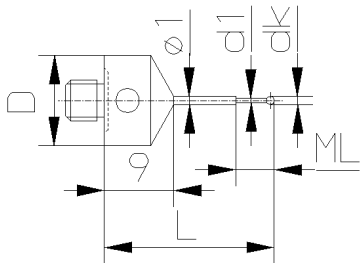
	Bestell-Nr. <i>Order No.</i>	Gewicht <i>Weight</i>	dk mm	d1 mm	L mm	ML mm
Taststifte (Typ F) / Styli (Type F) Kugel: Rubin / Ball: Ruby Schaft: HM / Shaft: TC	0.3-15.3-2 NTF	0.3g	0.3	0.2	15.3	2.5
	0.5-15.5-2 NTF	0.6g	0.5	0.3	15.5	2.5
	0.5-22.3-2 NTF	0.8g	0.5	0.3	22.3	4.3
	0.6-15.6-2 NTF	0.5g	0.6	0.4	15.6	4.5
	0.8-15.8-2 NTF	0.5g	0.8	0.6	15.8	4.5
	0.8-22.4-2 NTF	0.8g	0.8	0.6	22.4	4.4
	1.0-16-2 NTF	0.5g	1.0	0.8	16.0	4.5
	1.0-22.5-2 NTF	0.8g	1.0	0.8	22.5	4.5
	*** 1.0-34.2-2 NTF	0.6g	1.0	0.8	34.2	14.2
	1.0-34.5-2 NTF	0.6g	1.0	0.8	34.5	14.5
	1.5-22.7-2 NTF	0.7g	1.5	1.2	22.7	10.3
	1.8-46.9-2 NTF	1.2g	1.8	1.5	46.9	40.9
	2.0-23-2 NTF	0.8g	2.0	1.5	23.0	10.6
	*** 4.0-34.5-2 NTF	1.8g	4.0	2.0	34.5	34.5



*** Kugel ist abgeflacht (HM-Kugel) / Ball: TC flattened

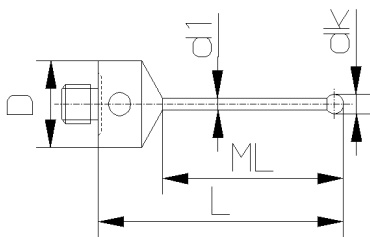
M5 (Ø 11mm)

Anschluss-Gewinde M5 / M5 thread styli	Bestell-Nr. <i>Order No.</i>	Gewicht <i>Weight</i>	D mm	dk mm	d1 mm	L mm	ML mm
Taststifte (Typ S) / Styli (Type S) Kugel: Rubin / Ball: Ruby Schaft: HM / Shaft: TC	0.2-21.8-11 NTS	5.3g	11	0.2	0.15	21.8	1.5
	0.25-21.8-11 NTS	5.3g	11	0.25	0.2	21.8	2.5
	0.3-21.8-11 NTS	5.3g	11	0.3	0.2	21.8	2.5
	0.4-21.9-11 NTS	5.3g	11	0.4	0.3	21.9	2.5
	0.5-22.0-11 NTS	5.3g	11	0.5	0.3	22.0	2.5
	0.6-22.1-11 NTS	5.3g	11	0.6	0.4	22.1	4.5
	0.7-22.2-11 NTS	5.3g	11	0.7	0.4	22.2	4.5
	0.8-22.3-11 NTS	5.3g	11	0.8	0.6	22.3	4.5
	0.9-22.4-11 NTS	5.3g	11	0.9	0.6	22.4	4.5
	1.0-22.5-11 NTS	5.3g	11	1.0	0.8	22.5	4.5



Bestell-Nr. <i>Order No.</i>	Gewicht <i>Weight</i>	D mm	dk mm	d1 mm	L mm	ML mm
1.35-32.9-11 NTS	5.4g	11	1.35	1.0	32.9	23.9
1.5-33-11 NTS	5.4g	11	1.5	1.0	33.0	24.0
2.0-33.5-11 NTS	5.8g	11	2.0	1.5	33.5	24.5
2.5-34-11 NTS	5.9g	11	2.5	1.5	34.0	25.0
3.0-34.5-18 NTS	20.9g	18	3.0	2.0	34.5	16.5
5.0-43.5-18 NTS	24.5g	18	5.0	3.5	43.5	25.5

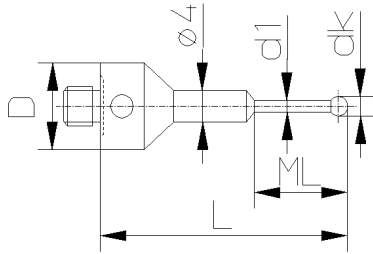
Taststifte (Typ S) / Styli (Type S)	Bestell-Nr. <i>Order No.</i>	Gewicht <i>Weight</i>	D mm	dk mm	d1 mm	L mm	ML mm
Kugel: Rubin / Ball: Ruby Schaft: HM / Shaft: TC	1.35-32.9-11 NTS	5.4g	11	1.35	1.0	32.9	23.9
	1.5-33-11 NTS	5.4g	11	1.5	1.0	33.0	24.0
	2.0-33.5-11 NTS	5.8g	11	2.0	1.5	33.5	24.5
	2.5-34-11 NTS	5.9g	11	2.5	1.5	34.0	25.0
	3.0-34.5-18 NTS	20.9g	18	3.0	2.0	34.5	16.5
	5.0-43.5-18 NTS	24.5g	18	5.0	3.5	43.5	25.5



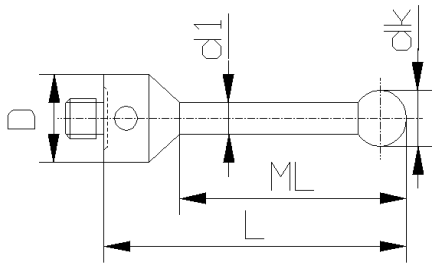
Newton Metrology Systems

M5 (Ø 11mm)

Anschluss-Gewinde M5 / M5 thread styli	Bestell-Nr. Order No.	Gewicht Weight	D mm	dk mm	d1 mm	L mm	ML mm
Taststifte / Styli Kugel: Rubin / Ball: Ruby Schaft: HM / Shaft: TC	0.2-32-11 NTB	7.0g	11	0.2	0.15	32.0	1.5
	0.25-32-11 NTB	7.0g	11	0.25	0.2	32.0	2.5
	0.3-32-11 NTB	7.0g	11	0.3	0.2	32.0	2.5
	0.4-32-11 NTB	7.0g	11	0.4	0.3	32.0	2.5
	0.5-32-11 NTB	7.0g	11	0.5	0.3	32.0	2.5
	0.6-32-11 NTB	7.0g	11	0.6	0.4	32.0	4.5
	0.7-32-11 NTB	7.0g	11	0.7	0.4	32.0	4.5
	0.8-32-11 NTB	6.5g	11	0.8	0.6	32.0	12.0
	0.9-32-11 NTB	6.5g	11	0.9	0.6	32.0	12.0
	1.0-32-11 NTB	6.6g	11	1.0	0.8	32.0	12.0
	1.35-32-11 NTB	6.6g	11	1.35	1.0	32.0	12.0
	1.35-44-11 NTB	7.3g	11	1.35	1.0	44.0	19.0
	1.5-32-11 NTB	6.6g	11	1.5	1.0	32.0	12.0
	1.5-44-11 NTB	7.2g	11	1.5	1.0	44.0	19.0
	2.0-32-11 NTB	6.9g	11	2.0	1.5	32.0	12.0
	2.0-44-11 NTB	7.5g	11	2.0	1.5	44.0	19.0
	2.0-58-11 NTB	7.8g	11	2.0	1.5	58.0	33.0
	2.5-32-11 NTB	6.9g	11	2.5	1.5	32.0	12.0
	2.5-44-11 NTB	7.6g	11	2.5	1.5	44.0	19.0
2.5-58-11 NTB	7.9g	11	2.5	1.5	58.0	33.0	



Anschluss-Gewinde M5 / M5 thread styli	Bestell-Nr. Order No.	Gewicht Weight	D mm	dk mm	d1 mm	L mm	ML mm
Taststifte (Typ B) / Styli (Type B) Kugel: Rubin / Ball: Ruby Schaft: HM / Shaft: TC	2.0-20-11 NTB	5.7g	11	2.0	1.5	20.0	10.0
	2.0-40-11 NTB	6.3g	11	2.0	1.5	40.0	30.0
	2.5-20-11 NTB	5.7g	11	2.5	1.5	20.0	10.0
	3.0-25-11 NTB	6.2g	11	3.0	2.0	25.0	15.0
	3.0-33.5-11 NTB	6.6g	11	3.0	2.0	33.5	23.5
	3.0-40-11 NTB	7.0g	11	3.0	2.0	40.0	30.0
	3.0-50-11 NTB	7.4g	11	3.0	2.0	50.0	40.0
	3.0-58-11 NTB	7.7g	11	3.0	2.0	58.0	48.0
	4.0-33.5-11 NTB	6.7g	11	4.0	2.0	33.5	23.5
	4.0-40-11 NTB	7.0g	11	4.0	2.0	40.0	30.0
	4.0-50-11 NTB	7.5g	11	4.0	2.0	50.0	40.0
	4.0-64-11 NTB	8.1g	11	4.0	2.0	64.0	54.0
	5.0-40-11 NTB	10.0g	11	5.0	3.5	40.0	30.0
	5.0-50-11 NTB	11.4g	11	5.0	3.5	50.0	40.0
	5.0-53-11 NTB	11.6g	11	5.0	3.5	53.0	43.0
	5.0-75-11 NTB	14.9g	11	5.0	3.5	75.0	65.0
	5.0-80-11 NTB	15.5g	11	5.0	3.5	80.0	70.0
	5.0-100-11 NTB	18.3g	11	5.0	3.5	100.0	90.0
	6.0-54-11 NTB	11.9g	11	6.0	3.5	54.0	44.0
	6.0-68-11 NTB	14.0g	11	6.0	3.5	68.0	58.0
	7.0-55-11 NTB	12.1g	11	7.0	3.5	55.0	45.0
	8.0-63.5-11 NTB	28.2g	11	8.0	6.0	63.5	50.5
	8.0-74-11 NTB	32.0g	11	8.0	6.0	74.0	61.0
	8.0-75-11 NTB	32.6g	11	8.0	6.0	75.0	62.0
	8.0-100-11 NTB	42.8g	11	8.0	6.0	100.0	87.0
	8.0-114.5-11 NTB	48.8g	11	8.0	6.0	114.5	101.5
	8.0-150-11 NTB	64.5g	11	8.0	6.0	150.0	130.0
	8.0-200-11 NTB	85.0g	11	8.0	6.0	200.0	180.0
	9.0-64.5-11 NTB	28.4g	11	9.0	6.0	64.5	51.5
	10.0-65.5-11 NTB	28.9g	11	10.0	6.0	65.5	52.5
	10.0-118-11 NTB	50.4g	11	10.0	6.0	118.0	105.0
	8.0-63.5-18 NTB	43.0g	18	8.0	6.0	63.5	41.5
	8.0-114.5-18 NTB	63.9g	18	8.0	6.0	114.5	92.5
9.0-64.5-18 NTB	42.0g	18	9.0	6.0	64.5	42.5	
10.0-65.5-18 NTB	44.0g	18	10.0	6.0	65.5	43.5	



Newton Metrology Systems

Mob : +91 73488 98009 / 73488 93121 mailto: info@newtonmetrology.in http:// www.newtonmetrology.in
 Dimensional measurement technology : Styli for coordinate measuring machines (CMM), machine tools, height gauges

Newton Metrology Systems

No.171,2nd Floor,3rd Main Road
New BDA Layout, Avalahalli
Girinagar , Bangalore
560085, India.

Mob. +91 73488 98009

Mob. +91 73488 93121

info@newtonmetrology.in

www.newtonmetrology.in

