

# ***STYLI and ACCESSORIES***



# **M3 (Ø 4mm)**

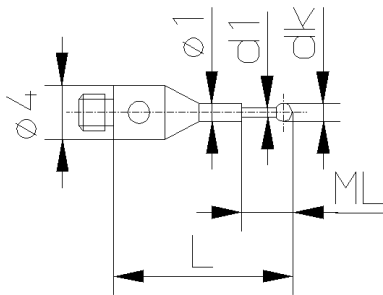
<b>Tastelemente / <i>Styli</i></b>	32-36
<b>Verlängerungen / <i>Extensions</i></b>	37
<b>Halter / <i>Holders for styli</i></b>	38
<b>Gelenke / <i>Knuckle joints</i></b>	38
<b>Drehstücke / <i>Rotating adaptors</i></b>	38
<b>Werkzeuge / <i>Tools</i></b>	39
<b>Tastelemente Set / <i>Styli sets</i></b>	40

# M3 (Ø 4mm)

Anschluss-Gewinde M3 (Ø 4mm) M3 thread styli (Ø 4mm)	Bestell-Nr. Order No.	Gewicht Weight	dk mm	d1 mm	L mm	ML mm
---	--------------------------	-------------------	----------	----------	---------	----------

## Taststifte (Typ A) / Styli (Type A)

Kugel: Rubin / Ball: Ruby  
Schaft: HM / Shaft: TC

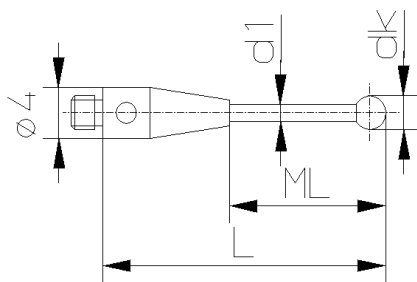


0.2-11-3 NTA	0.6g	0.2	0.15	11.0	1.5
0.25-11-3 NTA	0.6g	0.25	0.2	11.0	2.5
0.3-11-3 NTA	0.6g	0.3	0.2	11.0	2.5
0.4-11-3 NTA	0.6g	0.4	0.3	11.0	2.5
0.5-11-3 NTA	0.6g	0.5	0.3	11.0	2.5
0.6-11-3 NTA	0.6g	0.6	0.4	11.0	2.5
0.6-13-3 NTA	0.6g	0.6	0.4	13.0	4.5
0.7-11-3 NTA	0.6g	0.7	0.4	11.0	2.5
0.7-13-3 NTA	0.6g	0.7	0.4	13.0	4.5
0.8-11-3 NTA	0.6g	0.8	0.6	11.0	2.5
0.8-13-3 NTA	0.6g	0.8	0.6	13.0	4.5
0.9-11-3 NTA	0.6g	0.9	0.6	11.0	2.5
0.9-13-3 NTA	0.6g	0.9	0.6	13.0	4.5
1.0-11-3 NTA	0.6g	1.0	0.8	11.0	2.5
1.0-13-3 NTA	0.6g	1.0	0.8	13.0	4.5

Bestell-Nr. Order No.	Gewicht Weight	dk mm	d1 mm	L mm	ML mm
--------------------------	-------------------	----------	----------	---------	----------

## Taststifte (Typ B) / Styli (Type B)

Kugel: Rubin / Ball: Ruby  
Schaft: HM / Shaft: TC



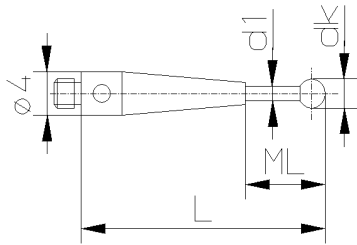
1.0-10.5-3 NTB	0.6g	1.0	0.7	10.5	4.5
1.0-15.5-3 NTB	0.7g	1.0	0.7	15.5	7.5
1.0-20.5-3 NTB	0.7g	1.0	0.7	20.5	12.5
1.0-30.5-3 NTB	0.8g	1.0	0.7	30.5	22.5
1.5-16-3 NTB	0.7g	1.5	0.7	16.0	8.0
1.5-21-3 NTB	0.7g	1.5	0.7	21.0	13.0
1.5-31-3 NTB	0.9g	1.5	1.0	31.0	23.0
2.0-16-3 NTB	0.8g	2.0	1.0	16.0	8.0
2.0-21-3 NTB	0.8g	2.0	1.0	21.0	13.0
2.0-26-3 NTB	0.9g	2.0	1.0	26.0	18.0
2.0-31-3 NTB	0.9g	2.0	1.0	31.0	23.0
2.0-36-3 NTB	1.0g	2.0	1.0	36.0	28.0
2.0-41-3 NTB	1.1g	2.0	1.0	41.0	33.0
2.5-16-3 NTB	0.8g	2.5	1.0	16.0	8.0
2.5-21-3 NTB	0.8g	2.5	1.0	21.0	13.0
2.5-31-3 NTB	1.3g	2.5	1.5	31.0	23.0
2.5-41-3 NTB	1.5g	2.5	1.5	41.0	33.0
3.0-21.5-3 NTB	1.1g	3.0	1.5	21.5	13.5
3.0-31.5-3 NTB	1.3g	3.0	1.5	31.5	23.5
3.0-36.5-3 NTB	1.4g	3.0	1.5	36.5	28.5
3.0-41.5-3 NTB	1.6g	3.0	1.5	41.5	33.5
3.0-46.5-3 NTB	1.7g	3.0	1.5	46.5	38.5
3.0-51.5-3 NTB	1.9g	3.0	1.5	51.5	43.5
4.0-22-3 NTB	1.4g	4.0	2.0	22.0	12.0
4.0-32-3 NTB	2.0g	4.0	2.0	32.0	22.0
4.0-37-3 NTB	2.1g	4.0	2.0	37.0	27.0
4.0-42-3 NTB	2.4g	4.0	2.0	42.0	32.0
4.0-47-3 NTB	2.6g	4.0	2.0	47.0	37.0
4.0-52-3 NTB	2.9g	4.0	2.0	52.0	42.0
5.0-22.5-3 NTB	1.7g	5.0	2.0	22.5	12.5
5.0-32.5-3 NTB	2.0g	5.0	2.0	32.5	22.5
5.0-37.5-3 NTB	2.3g	5.0	2.0	37.5	27.5
5.0-42.5-3 NTB	2.5g	5.0	2.0	42.5	32.5
5.0-47.5-3 NTB	2.7g	5.0	2.0	47.5	37.5
5.0-52.5-3 NTB	3.0g	5.0	2.0	52.5	42.5
6.0-23-3 NTB	1.8g	6.0	2.0	23.0	13.0
6.0-33-3 NTB	2.2g	6.0	2.0	33.0	23.0
6.0-38-3 NTB	2.4g	6.0	2.0	38.0	28.0
6.0-43-3 NTB	2.6g	6.0	2.0	43.0	33.0
6.0-48-3 NTB	2.9g	6.0	2.0	48.0	38.0
6.0-53-3 NTB	3.2g	6.0	2.0	53.0	43.0

## Newton Metrology Systems

# M3 (Ø 4mm)

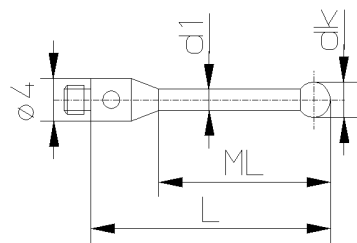
<b>Anschluss-Gewinde M3 (Ø 4mm)</b> <i>M3 thread styli (Ø 4mm)</i>	<b>Bestell-Nr.</b> <i>Order No.</i>	<b>Gewicht</b> <i>Weight</i>	<b>dk</b> mm	<b>d1</b> mm	<b>L</b> mm	<b>ML</b> mm
---	--	---------------------------------	-----------------	-----------------	----------------	-----------------

<b>Taststifte (Typ BS) / Styli (Type BS)</b> Kugel: Rubin / Ball: Ruby Schaft: HM / Shaft: TC	0.5-21-3 NTBS	1.0g	0.5	0.3	21.0	2.5
---	---------------	------	-----	-----	------	-----



Bestell-Nr. <i>Order No.</i>	Gewicht <i>Weight</i>	dk mm	d1 mm	L mm	ML mm
---------------------------------	--------------------------	----------	----------	---------	----------

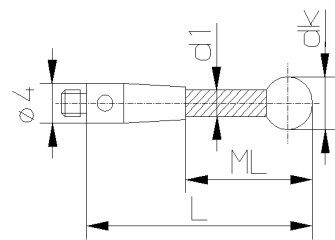
<b>Taststifte (Typ C) / Styli (Type C)</b> Kugel: Rubin / Ball: Ruby Schaft: Stahl / Shaft: Steel	1.0-21.5-3 NTC	0.9g	1.0	0.7	21.5	5.0
---	----------------	------	-----	-----	------	-----



Bestell-Nr. <i>Order No.</i>	Gewicht <i>Weight</i>	dk mm	d1 mm	L mm	ML mm
2.0-11-3 NTC	0.6g	2.0	1.2	11.0	5.0
2.0-16-3 NTC	0.6g	2.0	1.2	16.0	10.0
2.0-22-3 NTC	1.0g	2.0	1.4	22.0	8.0
2.5-21-3 NTC	0.8g	2.5	1.5	21.0	15.0
3.0-11.5-3 NTC	0.7g	3.0	2.0	11.5	5.5
3.0-21.5-3 NTC	0.9g	3.0	2.0	21.5	15.5
3.0-22.5-3 NTC	0.9g	3.0	2.0	22.5	16.5
4.0-12-3 NTC	0.8g	4.0	2.4	12.0	6.0
4.0-22-3 NTC	1.1g	4.0	2.4	22.0	16.0
4.0-23-3 NTC	1.2g	4.0	2.4	23.0	17.0
4.0-33-3 NTC	1.5g	4.0	2.4	33.0	27.0
5.0-23.5-3 NTC	1.6g	5.0	3.0	23.5	17.5
5.0-33.5-3 NTC	2.6g	5.0	3.0	33.5	29.5
6.0-13-3 NTC	1.1g	6.0	2.8	13.0	7.0
6.0-28-3 NTC	1.9g	6.0	3.0	28.0	22.0

Bestell-Nr. <i>Order No.</i>	Gewicht <i>Weight</i>	dk mm	d1 mm	L mm	ML mm
---------------------------------	--------------------------	----------	----------	---------	----------

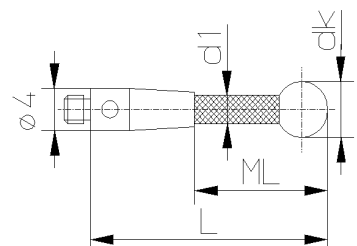
<b>Taststifte (Typ K) Keramik</b> <i>Styli (Type K) Ceramic</i> Kugel: Rubin / Ball: Ruby Schaft: Keramik / Shaft: Ceramic	3.0-51.5-3 NTKE	1.3g	3.0	2.0	51.5	41.5
---	-----------------	------	-----	-----	------	------



Bestell-Nr. <i>Order No.</i>	Gewicht <i>Weight</i>	dk mm	d1 mm	L mm	ML mm
4.0-32-3 NTKE	1.1g	4.0	2.0	32.0	22.0
4.0-42-3 NTKE	1.2g	4.0	2.0	42.0	32.0
4.0-52-3 NTKE	1.3g	4.0	2.0	52.0	42.0
5.0-42.5-3 NTKE	1.8g	5.0	3.0	42.5	32.5
5.0-52.5-3 NTKE	2.0g	5.0	3.0	52.5	42.5
5.0-62.5-3 NTKE	2.3g	5.0	3.0	62.5	52.5
6.0-43-3 NTKE	1.9g	6.0	3.0	43.0	33.0
6.0-53-3 NTKE	2.7g	6.0	3.0	53.0	43.0
6.0-63-3 NTKE	2.5g	6.0	3.0	63.0	53.0

Bestell-Nr. <i>Order No.</i>	Gewicht <i>Weight</i>	dk mm	d1 mm	L mm	ML mm
---------------------------------	--------------------------	----------	----------	---------	----------

<b>Taststifte (Typ CA) Kohlefaser</b> <i>Styli (Type CA) Carbon Fiber</i> Kugel: Rubin / Ball: Ruby Schaft: CFK / Shaft: Carbon	4.0-32-3 NTCA	1.0g	4.0	3.0	32.0	22.0
--	---------------	------	-----	-----	------	------



Bestell-Nr. <i>Order No.</i>	Gewicht <i>Weight</i>	dk mm	d1 mm	L mm	ML mm
4.0-42-3 NTCA	1.1g	4.0	3.0	42.0	32.0
4.0-52-3 NTCA	1.2g	4.0	3.0	52.0	42.0
5.0-42.5-3 NTCA	1.2g	5.0	3.0	42.5	32.5
5.0-52.5-3 NTCA	1.3g	5.0	3.0	52.5	42.5
5.0-62.5-3 NTCA	1.4g	5.0	3.0	62.5	52.5
6.0-43-3 NTCA	1.4g	6.0	3.0	43.0	33.0
6.0-53-3 NTCA	1.5g	6.0	3.0	53.0	43.0
6.0-63-3 NTCA	1.6g	6.0	3.0	63.0	53.0
6.0-78-3 NTCA	2.3g	6.0	4.0	78.0	67.0
6.0-103-3 NTCA	2.8g	6.0	4.0	103.0	92.0
8.0-79-3 NTCA	3.0g	8.0	4.0	79.0	68.0
8.0-104-3 NTCA	3.5g	8.0	4.0	104.0	93.0

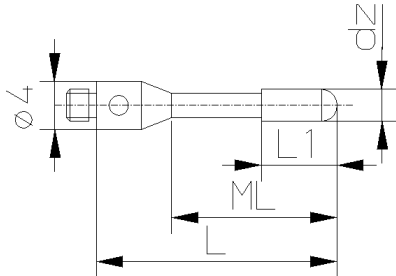
**Newton Metrology Systems**

Mob : +91 73488 98009 / 73488 93121 mailto: info@newtonmetrology.in http:// www.newtonmetrology.in  
Dimensional measurement technology : Styli for coordinate measuring machines (CMM), machine tools, height gauges

# M3 (Ø 4mm)

<b>Anschluss-Gewinde M3 (Ø 4mm)</b> <i>M3 thread styli (Ø 4mm)</i>	<b>Bestell-Nr.</b> <i>Order No.</i>	<b>Gewicht</b> <i>Weight</i>	<b>dz</b> mm	<b>L1</b> mm	<b>L</b> mm	<b>ML</b> mm
---	--	---------------------------------	-----------------	-----------------	----------------	-----------------

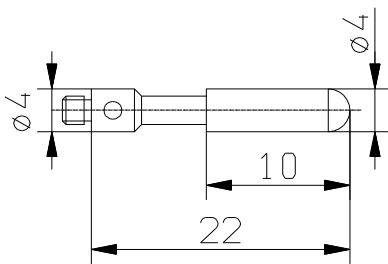
<b>Zylindertaststifte (Typ A) / Cylinder styli (Type A)</b> Zylinder: Rubin / <i>Cylinder: Ruby</i> Schaft: Stahl / <i>Shaft: Steel</i>	2.0-16-3 NZRA	0.7g	2.0	5.0	16.0	11.0
	3.0-22-3 NZRA	1.1g	3.0	10.0	22.0	17.0



<b>Bestell-Nr.</b> <i>Order No.</i>	<b>Gewicht</b> <i>Weight</i>
--	---------------------------------

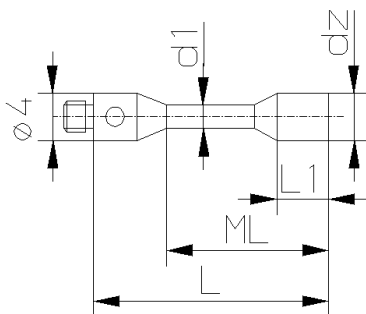
<b>Zylindertaststifte (Typ B) / Cylinder styli (Type B)</b>	4.0-22-3 NZRB	1.4g
---	---------------	------

Zylinder: Rubin / *Cylinder: Ruby*  
Schaft: Stahl / *Shaft: Steel*



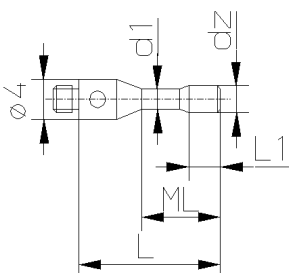
<b>Bestell-Nr.</b> <i>Order No.</i>	<b>Gewicht</b> <i>Weight</i>	<b>dz</b> mm	<b>d1</b> mm	<b>L1</b> mm	<b>L</b> mm	<b>ML</b> mm
--	---------------------------------	-----------------	-----------------	-----------------	----------------	-----------------

<b>Zylindertaststifte (Typ H) / Cylinder styli (Type H)</b> Zylinder: HM / <i>Cylinder: TC</i>	1.5-14-3 NZTH	0.8g	1.5	1.0	2.5	14.0	6.0
	3.0-16-3 NZTH	1.2g	3.0	1.5	3.5	16.0	8.0



<b>Bestell-Nr.</b> <i>Order No.</i>	<b>Gewicht</b> <i>Weight</i>	<b>dz</b> mm	<b>d1</b> mm	<b>L1</b> mm	<b>L</b> mm	<b>ML</b> mm
--	---------------------------------	-----------------	-----------------	-----------------	----------------	-----------------

<b>Zylindertaststifte (Typ S) / Cylinder styli (Type S)</b> Zylinder: Stahl / <i>Cylinder: Steel</i>	1.5-13-3 NZTS	0.7g	1.5	1.0	1.5	13.0	4.0
	2.0-13-3 NZTS	0.8g	2.0	1.5	2.0	13.0	4.0
	2.5-15-3 NZTS	0.9g	2.5	1.7	2.5	15.0	5.5
	3.0-15-3 NZTS	1.0g	3.0	2.0	4.0	15.0	5.5

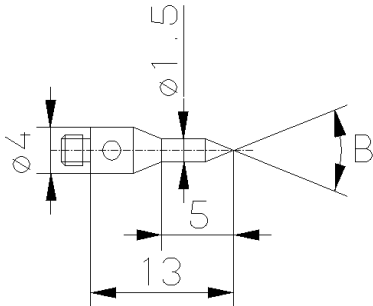


**Newton Metrology Systems**

Mob : +91 73488 98009 / 73488 93121 mailto: info@newtonmetrology.in [http:// www.newtonmetrology.in](http://www.newtonmetrology.in)  
Dimensional measurement technology : Styli for coordinate measuring machines (CMM), machine tools, height gauges

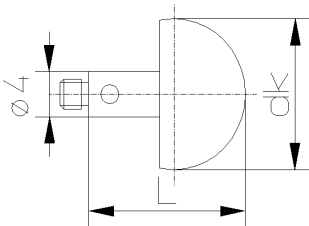
# M3 (Ø 4mm)

Anschluss-Gewinde M3 (Ø 4mm) / M3 thread styli (Ø 4mm)	Bestell-Nr. Order No.	Spitze Point	Gewicht Weight	β
<b>Tastspitzen / Pointed styli</b>	30-13-3 NTS	HM / TC	0.7g	30°
	60-13-3 NTS	HM / TC	0.7g	60°



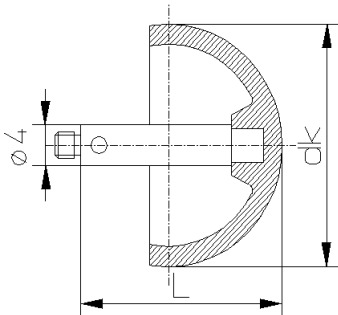
Bestell-Nr. Order No.	Gewicht Weight	dk mm	L mm
--------------------------	-------------------	----------	---------

<b>Keramikkugel-Taster / Ceramic ball styli</b>	Bestell-Nr. Order No.	Gewicht Weight	dk mm	L mm
Kugel: Keramik / Ball: Ceramic Schaft: Stahl / Shaft: Steel	8.0-10-3 NKK	1.3g	8.0	10.0
	10.0-11-3 NKK	2.0g	10.0	11.0



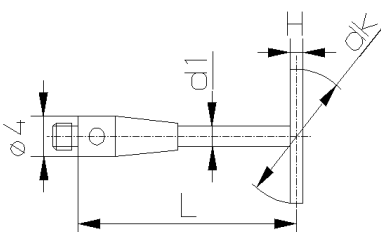
Bestell-Nr. Order No.	Gewicht Weight	dk mm	L mm
--------------------------	-------------------	----------	---------

<b>Hohle Keramikkugel-Taster (Typ E) Hollow ceramic ball styli (Type E)</b>	Bestell-Nr. Order No.	Gewicht Weight	dk mm	L mm
Kugel: Keramik / Ball: Ceramic Schaft: Stahl / Shaft: Steel	18.0-16-3 NHKE	5.6g	18.0	16.0
	24.0-19-3 NHKE	9.0g	24.0	19.0
	30.0-22-3 NHKE	14.6g	30.0	22.0



Bestell-Nr. Order No.	Gewicht Weight	dk mm	d1 mm	L mm	H mm
--------------------------	-------------------	----------	----------	---------	---------

<b>Kugelscheiben-Taststifte / Ball disc styli</b>	Bestell-Nr. Order No.	Gewicht Weight	dk mm	d1 mm	L mm	H mm
Scheibe: Keramik / Disc: Ceramic Schaft: HM / Shaft: TC	5.0-20-3 NKSK	1.1g	5.0	1.5	20.0	0.5
	10.0-25-3 NKSK	1.8g	10.0	2.0	25.0	0.8
	14.0-25-3 NKSK	2.2g	14.0	2.0	25.0	1.0

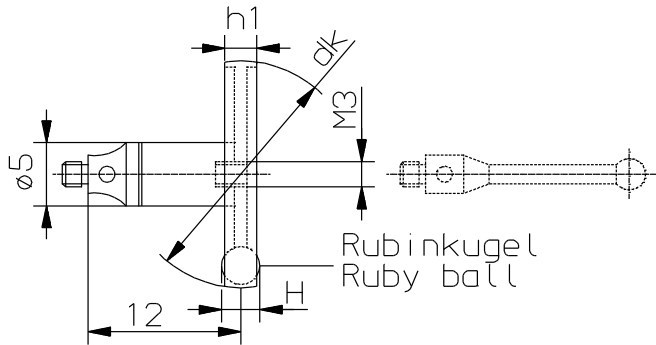


**Newton Metrology Systems**

Mob : +91 73488 98009 / 73488 93121 mailto: info@newtonmetrology.in http:// www.newtonmetrology.in  
Dimensional measurement technology : Styli for coordinate measuring machines (CMM), machine tools, height gauges

# M3 (Ø 4mm)

Anschluss-Gewinde M3 (Ø 4mm) <i>M3 thread styli (Ø 4mm)</i>	Bestell-Nr. <i>Order No.</i>	Gewicht <i>Weight</i>	dk mm	H mm	h1 mm
<b>Kugelscheiben drehbar / <i>Ball disc styli rotary</i></b> Scheibe: Stahl / <i>Disc: Steel</i> Schaft: Stahl / <i>Shaft: Steel</i>	18.0-12-3 NKSD	3.1g	18.0	3.5	2.5
	25.0-12-3 NKSD	4.3g	25.0	3.5	2.5
	40.0-12-3 NKSD	10.5g	40.0	6.0	4.0

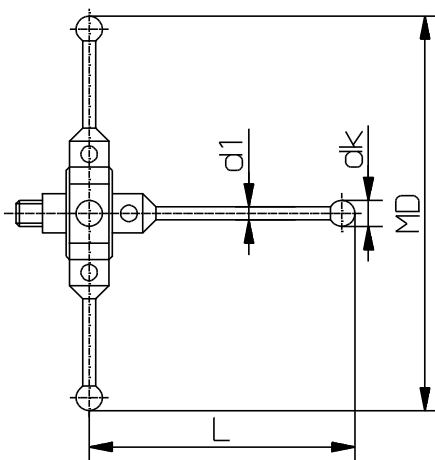


Aufnahme der **Taststifte mit Gewinde M3** möglich.  
Mit Hilfe des integrierten Drehstücks können die  
angebauten Tastelemente ausgerichtet werden.

*M3 thread styli may be used.*  
*A built-in rotating adaptor allows styli positioning.*

Bestell-Nr. <i>Order No.</i>	Gewicht <i>Weight</i>	dk mm	d1 mm	MD mm	L mm
<b>Sternstaster drehbar (Typ E) / <i>Star styli rotary (Type E)</i></b>					
2.0-32-3 NSTE	6.2g	2.0	1.4	32.0	21.0
2.0-52-3 NSTE	8.4g	2.0	1.4	52.0	31.0

Kugel: Rubin / *Ball: Ruby*  
Schaft: Stahl / *Shaft: Steel*

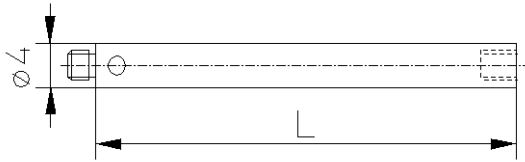


Mit Hilfe des integrierten Drehstücks können die  
angebauten Tastelemente ausgerichtet werden.

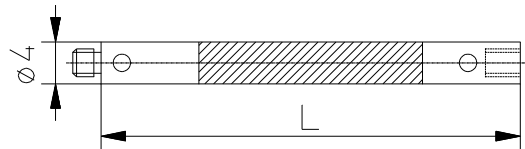
*A built-in rotating adaptor allows styli positioning.*

# M3 (Ø 4mm)

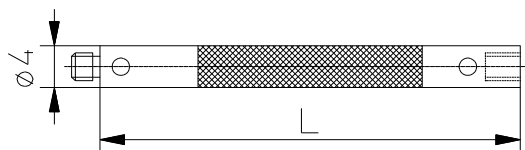
<b>Anschluss-Gewinde M3 (Ø 4mm)</b> <i>M3 thread styli (Ø 4mm)</i>	<b>Bestell-Nr.</b> <i>Order No.</i>	<b>Material</b> <i>Material</i>	<b>Gewicht</b> <i>Weight</i>	<b>L</b> <i>mm</i>
<b>Verlängerungen Stahl / Extensions Steel</b>	10-3 NV	Stahl / Steel	0.7g	10.0
	20-3 NV	Stahl / Steel	1.7g	20.0
	30-3 NV	Stahl / Steel	2.6g	30.0
	35-3 NV	Stahl / Steel	3.2g	35.0
	40-3 NV	Stahl / Steel	3.6g	40.0
	50-3 NV	Stahl / Steel	4.6g	50.0



<b>Bestell-Nr.</b> <i>Order No.</i>	<b>Material</b> <i>Material</i>	<b>Gewicht</b> <i>Weight</i>	<b>L</b> <i>mm</i>	
<b>Verlängerungen Keramik / Extensions Ceramic</b>	40-3 NVK	Keramik / Ceramic	2.1g	40.0
	50-3 NVK	Keramik / Ceramic	2.4g	50.0
	60-3 NVK	Keramik / Ceramic	2.8g	60.0
	70-3 NVK	Keramik / Ceramic	3.2g	70.0
	80-3 NVK	Keramik / Ceramic	3.6g	80.0
	90-3 NVK	Keramik / Ceramic	3.9g	90.0
	100-3 NVK	Keramik / Ceramic	4.3g	100.0



<b>Bestell-Nr.</b> <i>Order No.</i>	<b>Material</b> <i>Material</i>	<b>Gewicht</b> <i>Weight</i>	<b>L</b> <i>mm</i>	
<b>Verlängerungen Kohlefaser / Extensions Carbon Fiber</b>	40-3 NVCA	CFK / Carbon	1.4g	40.0
	50-3 NVCA	CFK / Carbon	1.6g	50.0
	60-3 NVCA	CFK / Carbon	1.8g	60.0
	70-3 NVCA	CFK / Carbon	2.0g	70.0
	75-3 NVCA	CFK / Carbon	2.1g	75.0
	80-3 NVCA	CFK / Carbon	2.2g	80.0
	90-3 NVCA	CFK / Carbon	2.2g	90.0
	100-3 NVCA	CFK / Carbon	2.6g	100.0

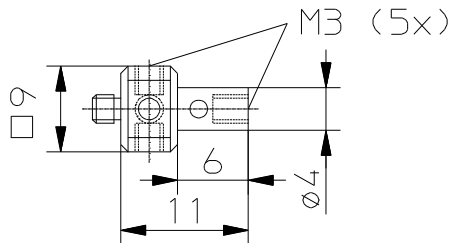


## Newton Metrology Systems



# M3 (Ø 4mm)

Anschluss-Gewinde M3 (Ø 4mm) / M3 thread styli (Ø 4mm)	Bestell-Nr. Order No.	Material Material	Gewicht Weight
Taststift-Halter (Typ A) / Holders for styli (Type A) 5-Way	9.0-11-3 NTHA	Stahl / Steel	2.4g

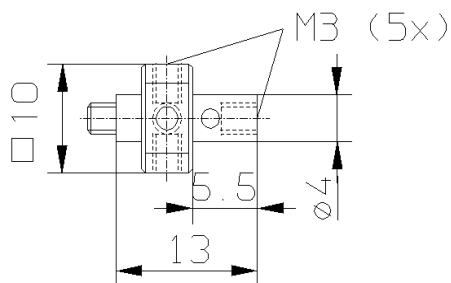


Zur Aufnahme der **Taststifte mit Gewinde M3**.

*For use with M3 thread styli.*

Bestell-Nr. Order No.	Material Material	Gewicht Weight
--------------------------	----------------------	-------------------

Taststift-Halter drehbar (Typ F) 5-Wege Holders for styli rotary (Type F) 5-Way	10.0-13-3 NTHF	Stahl / Steel	3.3g
--	----------------	---------------	------



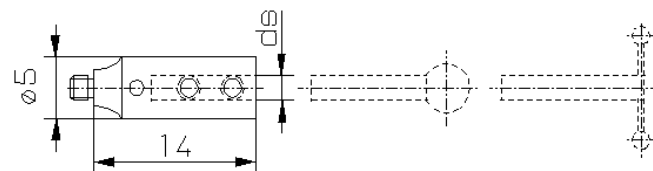
Zur Aufnahme der **Taststifte mit Gewinde M3**.  
Mit Hilfe des integrierten Drehstücks können die angebaute Tastelemente ausgerichtet werden.

*For use with M3 thread styli.*

*A built-in rotating adaptor allows styli positioning.*

Bestell-Nr. Order No.	Material Material	Gewicht Weight	ds mm
--------------------------	----------------------	-------------------	----------

Taststift-Halter (Typ Z) / Holders for styli (Type Z)	1.0-3 NHZ	Stahl / Steel	2.1g	1.0
	1.5-3 NHZ	Stahl / Steel	2.0g	1.5
	2.0-3 NHZ	Stahl / Steel	1.8g	2.0

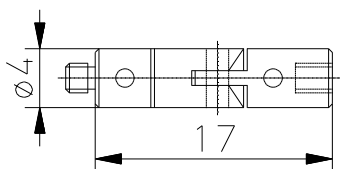


Zur Aufnahme der **Taststifte (Typ FM), (Typ F), (Typ N)** und **T-Taster (Typ H)** (Seite 6+8+9).

*For use with Styli (Type FM), (Type F), (Type N) and T-Styli (Type H) (Page 6+8+9).*

Bestell-Nr. Order No.	Material Material	Gewicht Weight
--------------------------	----------------------	-------------------

Gelenk drehbar (Typ B) / Knuckle joints rotary (Type B)	4.0-17-3 NGBD	Stahl / Steel	1.4g
---	---------------	---------------	------

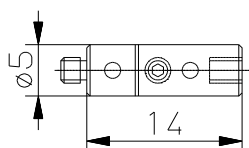


Mit Hilfe des integrierten Drehstücks können die angebaute Tastelemente ausgerichtet werden.

*A built-in rotating adaptor allows styli positioning.*

Bestell-Nr. Order No.	Material Material	Gewicht Weight
--------------------------	----------------------	-------------------

Drehstück / Rotating adaptor	5.0-14-3 NDS	Stahl / Steel	1.8g
------------------------------	--------------	---------------	------



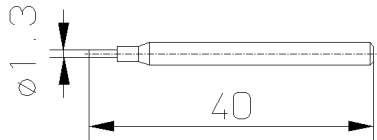
Mit Hilfe des Drehstücks können die angebaute Tastelemente ausgerichtet werden.

*Rotating adaptor allows styli positioning.*

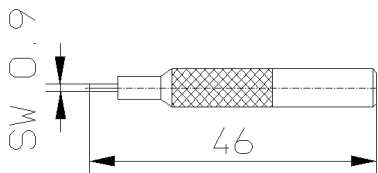
## Newton Metrology Systems

# M3 (Ø 4mm)

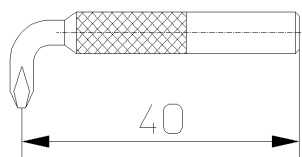
Werkzeuge für Komponenten mit Anschluss-Gewinde M3 (Ø 4mm) / Tools for M3 (Ø 4mm) thread components	Bestell-Nr. / Order No.	Bezeichnung / Description
Stiftschlüssel / Pin key	1.3 NWST	Ø 1.3mm für Komponenten mit Gewinde M3 Ø 1.3mm for M3 thread components



	Bestell-Nr. / Order No.	Bezeichnung / Description
Sechskantschlüssel / Hexagon key	0.9 NWSE	SW 0.9mm für Inbus-Schrauben M2 0.9mm for hexagon socket screw M2



	Bestell-Nr. / Order No.	Bezeichnung / Description
Kreuzschlüssel / Cross-point key	2.5 NWKR	2.5mm für Kreuzschlitzschrauben 2.5mm for Philips screw



	Bestell-Nr. / Order No.	Inhalt / Contents
Schraubensortiment (Ersatzschrauben) / Screws assortment (Replacement screws)	6-3 NSS	6 Teile / 6 parts

Schraubensortiment bestehend aus:	
2 Stk.	Senkschrauben M2x4
4 Stk.	Gewindestifte M2x2

Screws assortment:	
2 pcs	Flat headed screws M2x4
4 pcs	Set screw M2x2

## Newton Metrology Systems

# M3 (Ø 4mm)

Anschluss-Gewinde M3 (Ø 4mm) / M3 (Ø 4mm) thread styli sets	Bestell-Nr. Order No.	Inhalt Contents
Taststifte Set (Typ A) / Styli sets (Type A)	20-3 NTBA	20 Teile / 20 parts

Tastelemente und diverses Zubehör sind in Taststifte Sets zusammengestellt. Dieses Set ist mit den gebräuchlichsten Taststiften bestückt, um einfachere Messungen erfolgreich zu bewältigen. Durch die freien Steckplätze haben Sie die Möglichkeit, Ihren Bausatz jederzeit mit benötigten Komponenten zu erweitern, um auch anspruchsvollere Messaufgaben lösen zu können. Im grosszügig dimensionierten Holzetui sind Ihre Tastelemente sicher vor Staub und Beschädigung geschützt.

*Styli and accessories are available in styli sets.*

*This small set is stocked with the most common styli and accessories needed to perform simple measurements successfully.*

*The empty spaces offer the possibility of enlarging your set at any time with the components needed for even the most specialized measurement requirements.*

*The sturdy wooden case protects your styli from dust or damage.*

Im Set enthaltene Komponenten: <i>Supplied equipment:</i>	Skizze: <i>Drawing:</i>
1 Stk. / pc 1.0-10.5-3 NTB	Seite / Page 32
1 Stk. / pc 1.0-20.5-3 NTB	Seite / Page 32
1 Stk. / pc 2.0-16-3 NTB	Seite / Page 32
1 Stk. / pc 2.0-36-3 NTB	Seite / Page 32
1 Stk. / pc 3.0-31.5-3 NTB	Seite / Page 32
1 Stk. / pc 3.0-41.5-3 NTB	Seite / Page 32
1 Stk. / pc 4.0-32-3 NTB	Seite / Page 32
1 Stk. / pc 4.0-42-3 NTB	Seite / Page 32
1 Stk. / pc 4.0-52-3 NTCA	Seite / Page 33
1 Stk. / pc 5.0-52.5-3 NTKE	Seite / Page 33
1 Stk. / pc 6.0-63-3 NTCA	Seite / Page 33
1 Stk. / pc 10-3 NV	Seite / Page 37
1 Stk. / pc 20-3 NV	Seite / Page 37
1 Stk. / pc 30-3 NV	Seite / Page 37
1 Stk. / pc 4.0-17-3 NGBD	Seite / Page 38
1 Stk. / pc 10.0-13-3 NTHF	Seite / Page 38
2 Stk. / pcs 1.3 NWST	Seite / Page 39
1 Stk. / pc 0.9 NWSE	Seite / Page 39
1 Stk. / pc 2.5 NWKR	Seite / Page 39



	Bestell-Nr. Order No.	Bezeichnung Description
Leere Holzetuis / Empty wooden cases	24-3 NHSB	Holzetui mit Einlegeplatte für maximum 24 Teile (Tastelemente mit Gewinde M3 (Ø 4mm)) Wooden case with plate for max. 24 parts (Styli with M3 (Ø 4mm) thread)

## Newton Metrology Systems

Mob : +91 73488 98009 / 73488 93121 mailto: info@newtonmetrology.in http:// www.newtonmetrology.in  
Dimensional measurement technology : Styli for coordinate measuring machines (CMM), machine tools, height gauges

# M3 (Ø 5mm)

**Tastelemente / *Styli*** 42-43

---

**Verlängerungen / *Extensions*** 43

---

**Tastelemente Set / *Styli sets*** 43

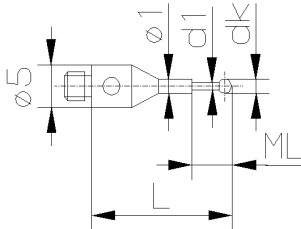
---

# M3 (Ø 5mm)

Anschluss-Gewinde M3 (Ø 5mm) M3 thread styli (Ø 5mm)	Bestell-Nr. Order No.	Gewicht Weight	dk mm	d1 mm	L mm	ML mm
---	--------------------------	-------------------	----------	----------	---------	----------

## Taststifte (Typ A) / Styli (Type A)

Kugel: Rubin / Ball: Ruby  
Schaft: HM / Shaft: TC

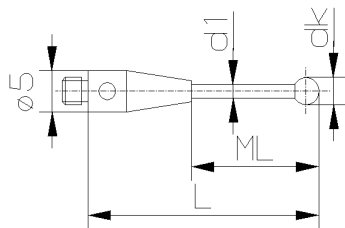


0.25-11-5 NTA	0.8g	0.25	0.2	11.0	2.5
0.25-25-5 NTA	1.0g	0.25	0.2	25.0	4.0
0.3-13-5 NTA	1.0g	0.3	0.2	13.0	2.5
0.3-15-5 NTA	1.0g	0.3	0.2	15.0	2.5
0.3-18-5 NTA	1.0g	0.3	0.2	18.0	2.5
0.3-20-5 NTA	1.1g	0.3	0.2	20.0	2.5
0.4-13-5 NTA	1.0g	0.4	0.3	13.0	2.5
0.4-15-5 NTA	1.0g	0.4	0.3	15.0	2.5
0.4-20-5 NTA	1.1g	0.4	0.3	20.0	2.5
0.5-13-5 NTA	1.0g	0.5	0.3	13.0	2.5
0.5-15-5 NTA	1.0g	0.5	0.3	15.0	2.5
0.5-18-5 NTA	1.0g	0.5	0.3	18.0	2.5
0.5-20-5 NTA	1.0g	0.5	0.3	20.0	2.5
0.5-24-5 NTA	1.1g	0.5	0.3	24.0	2.5
0.6-14-5 NTA	1.0g	0.6	0.4	14.0	4.5
0.6-17-5 NTA	1.0g	0.6	0.4	17.0	4.5
0.6-20-5 NTA	1.0g	0.6	0.4	20.0	4.5
0.6-24-5 NTA	1.1g	0.6	0.4	24.0	4.5
0.8-17-5 NTA	1.0g	0.8	0.6	17.0	5.0
0.8-20-5 NTA	1.0g	0.8	0.6	20.0	5.0
0.8-25-5 NTA	1.1g	0.8	0.6	25.0	5.0
0.8-34-5 NTA	1.1g	0.8	0.6	34.0	4.0
0.8-35-5 NTA	1.1g	0.8	0.6	35.0	5.0
1.0-20-5 NTA	1.1g	1.0	0.8	20.0	5.0
1.0-25-5 NTA	1.1g	1.0	0.8	25.0	5.0
1.0-30-5 NTA	1.1g	1.0	0.8	30.0	5.0
1.0-35-5 NTA	1.1g	1.0	0.8	35.0	5.0
1.0-40-5 NTA	1.3g	1.0	0.8	40.0	5.0

Bestell-Nr. Order No.	Gewicht Weight	dk mm	d1 mm	L mm	ML mm
--------------------------	-------------------	----------	----------	---------	----------

## Taststifte (Typ B) / Styli (Type B)

Kugel: Rubin / Ball: Ruby  
Schaft: HM / Shaft: TC



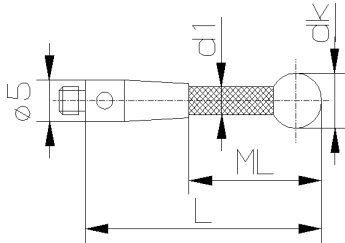
0.8-14-5 NTB	1.0g	0.8	0.6	14.0	5.0
1.0-14-5 NTB	1.0g	1.0	0.8	14.0	5.0
1.0-17-5 NTB	1.0g	1.0	0.8	17.0	8.0
1.0-20-5 NTB	1.0g	1.0	0.8	20.0	11.0
1.35-24-5 NTB	1.1g	1.35	1.0	24.0	15.0
1.5-14-5 NTB	1.0g	1.5	1.0	14.0	5.0
1.5-17-5 NTB	1.0g	1.5	1.0	17.0	8.0
1.5-20-5 NTB	1.1g	1.5	1.0	20.0	11.0
1.5-25-5 NTB	1.1g	1.5	1.0	25.0	16.0
1.5-30-5 NTB	1.2g	1.5	1.0	30.0	21.0
1.5-35-5 NTB	1.2g	1.5	1.0	35.0	26.0
1.5-40-5 NTB	1.3g	1.5	1.0	40.0	31.0
2.0-14-5 NTB	1.0g	2.0	1.0	14.0	5.0
2.0-17-5 NTB	1.0g	2.0	1.0	17.0	8.0
2.0-20-5 NTB	1.1g	2.0	1.0	20.0	11.0
2.0-25-5 NTB	1.1g	2.0	1.0	25.0	16.0
2.0-30-5 NTB	1.2g	2.0	1.0	30.0	21.0
2.0-35-5 NTB	1.6g	2.0	1.5	35.0	26.0
2.0-40-5 NTB	1.8g	2.0	1.5	40.0	31.0
2.5-20-5 NTB	1.3g	2.5	1.5	20.0	11.0
2.5-25-5 NTB	1.4g	2.5	1.5	25.0	16.0
2.5-30-5 NTB	1.5g	2.5	1.5	30.0	21.0
2.5-35-5 NTB	1.6g	2.5	1.5	35.0	26.0
2.5-40-5 NTB	1.8g	2.5	1.5	40.0	31.0

## Newton Metrology Systems

Mob : +91 73488 98009 / 73488 93121 mailto: info@newtonmetrology.in http:// www.newtonmetrology.in  
Dimensional measurement technology : Styli for coordinate measuring machines (CMM), machine tools, height gauges

# M3 (Ø 5mm)

Anschluss-Gewinde M3 (Ø 5mm) <i>M3 thread styli (Ø 5mm)</i>	Bestell-Nr. <i>Order No.</i>	Gewicht <i>Weight</i>	dk mm	d1 mm	L mm	ML mm
<b>Taststifte (Typ CA) Kohlefaser</b> <b>Styli (Type CA) Carbon Fiber</b> Kugel: Rubin / <i>Ball: Ruby</i> Schaft: CFK / <i>Shaft: Carbon</i>	3.0-25-5 NTCA	1.1g	3.0	2.0	25.0	16.0
	3.0-33-5 NTCA	1.1g	3.0	2.0	33.0	24.0
	3.0-40-5 NTCA	1.1g	3.0	2.0	40.0	31.0
	3.0-42-5 NTCA	1.1g	3.0	2.0	42.0	33.0
	3.0-50-5 NTCA	1.2g	3.0	2.0	50.0	41.0
	3.0-58-5 NTCA	1.2g	3.0	2.0	58.0	49.0
	3.0-59-5 NTCA	1.2g	3.0	2.0	59.0	50.0
	3.0-65-5 NTCA	1.3g	3.0	2.0	65.0	56.0
	3.0-75-5 NTCA	1.3g	3.0	2.0	75.0	66.0
	3.0-84-5 NTCA	1.3g	3.0	2.0	84.0	75.0
	3.0-100-5 NTCA	1.4g	3.0	2.0	100.0	91.0
	3.0-125-5 NTCA	1.5g	3.0	2.0	125.0	116.0
	4.0-50-5 NTCA	1.2g	4.0	2.0	50.0	41.0
	5.0-30-5 NTCA	1.3g	5.0	3.0	30.0	21.0
	5.0-40-5 NTCA	1.4g	5.0	3.0	40.0	31.0
	5.0-50-5 NTCA	1.6g	5.0	3.0	50.0	41.0
	5.0-60-5 NTCA	1.6g	5.0	3.0	60.0	51.0
	5.0-75-5 NTCA	1.8g	5.0	3.0	75.0	66.0
	6.0-50-5 NTCA	1.7g	6.0	3.0	50.0	41.0
	6.0-70-5 NTCA	1.9g	6.0	3.0	70.0	61.0
	6.0-100-5 NTCA	2.3g	6.0	3.0	100.0	91.0
	8.0-30-5 NTCA	2.3g	8.0	5.0	30.0	30.0
	8.0-50-5 NTCA	2.9g	8.0	5.0	50.0	50.0
	8.0-70-5 NTCA	3.5g	8.0	5.0	70.0	70.0
	8.0-100-5 NTCA	4.4g	8.0	5.0	100.0	100.0
	8.0-125-5 NTCA	5.0g	8.0	5.0	125.0	125.0



Bestell-Nr. <i>Order No.</i>	Material <i>Material</i>	Gewicht <i>Weight</i>	L mm
---------------------------------	-----------------------------	--------------------------	---------

Verlängerungen Kohlefaser / <i>Extensions Carbon Fiber</i>	Bestell-Nr. <i>Order No.</i>	Material <i>Material</i>	Gewicht <i>Weight</i>	L mm
	20-5 NVCA	CFK / <i>Carbon</i>	1.7g	20.0
	25-5 NVCA	CFK / <i>Carbon</i>	1.8g	25.0
	30-5 NVCA	CFK / <i>Carbon</i>	2.0g	30.0
	40-5 NVCA	CFK / <i>Carbon</i>	2.1g	40.0
	50-5 NVCA	CFK / <i>Carbon</i>	2.3g	50.0
	60-5 NVCA	CFK / <i>Carbon</i>	2.6g	60.0
	65-5 NVCA	CFK / <i>Carbon</i>	2.6g	65.0
	75-5 NVCA	CFK / <i>Carbon</i>	2.6g	75.0
	80-5 NVCA	CFK / <i>Carbon</i>	2.7g	80.0
	100-5 NVCA	CFK / <i>Carbon</i>	3.3g	100.0
	130-5 NVCA	CFK / <i>Carbon</i>	3.5g	130.0
	150-5 NVCA	CFK / <i>Carbon</i>	4.2g	150.0

Bestell-Nr. <i>Order No.</i>	Bezeichnung <i>Description</i>
---------------------------------	-----------------------------------

Leere Holzetuis / <i>Empty wooden cases</i>	17-5 NHSA	Holzetui mit Einlegeplatte für maximum 17 Teile (Tastelemente mit Gewinde M3 (Ø 5mm)) <i>Wooden case with plate for max. 17 parts (Styli with M3 (Ø 5mm) thread)</i>
---	-----------	--

## Newton Metrology Systems

**Newton Metrology Systems**

No.171,2<sup>nd</sup> Floor,3<sup>rd</sup> Main Road  
New BDA Layout, Avalahalli  
Girinagar , Bangalore  
560085, India.

Mob. +91 73488 98009

Mob. +91 73488 93121

[info@newtonmetrology.in](mailto:info@newtonmetrology.in)

[www.newtonmetrology.in](http://www.newtonmetrology.in)

The logo consists of a solid blue square. At the top of the square, there is a thin white horizontal line. Below this line, the word "NEWTON" is written in a white, bold, sans-serif font, centered horizontally within the square.

**NEWTON**