

# ***STYLI and ACCESSORIES***



NEWTON

# M4 (Ø 5mm)

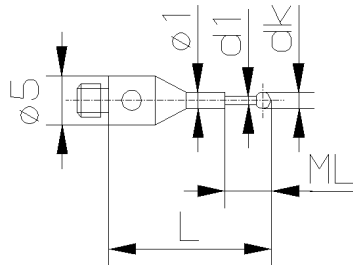
<b>Tastelemente / <i>Styli</i></b>	46-48
<b>Verlängerungen / <i>Extensions</i></b>	49-50
<b>Halter / <i>Holders for styli</i></b>	50
<b>Drehstücke / <i>Rotating adaptors</i></b>	51
<b>Werkzeuge / <i>Tools</i></b>	51
<b>Tastelemente Set / <i>Styli sets</i></b>	51

# M4 (Ø 5mm)

Anschluss-Gewinde M4 (Ø 5mm) M4 thread styli (Ø 5mm)	Bestell-Nr. Order No.	Gewicht Weight	dk mm	d1 mm	L mm	ML mm
---	--------------------------	-------------------	----------	----------	---------	----------

## Taststifte (Typ A) / Styli (Type A)

Kugel: Rubin / Ball: Ruby  
Schaft: HM / Shaft: TC

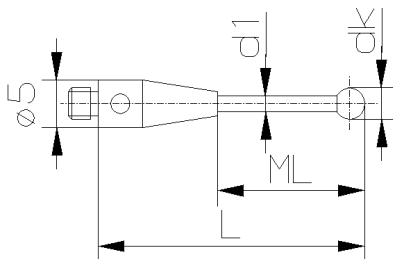


0.2-13-4 NTA	1.1g	0.2	0.15	13.0	1.5
0.25-13-4 NTA	1.1g	0.25	0.2	13.0	2.5
0.3-13-4 NTA	1.1g	0.3	0.2	13.0	2.5
0.4-13-4 NTA	1.1g	0.4	0.3	13.0	2.5
0.5-13-4 NTA	1.1g	0.5	0.3	13.0	2.5
0.6-13-4 NTA	1.1g	0.6	0.4	13.0	2.5
0.6-15-4 NTA	1.1g	0.6	0.4	15.0	4.5
0.7-13-4 NTA	1.1g	0.7	0.4	13.0	2.5
0.7-15-4 NTA	1.1g	0.7	0.4	15.0	4.5
0.8-13-4 NTA	1.1g	0.8	0.6	13.0	2.5
0.8-15-4 NTA	1.1g	0.8	0.6	15.0	4.5
0.9-13-4 NTA	1.1g	0.9	0.6	13.0	2.5
0.9-15-4 NTA	1.1g	0.9	0.6	15.0	4.5
1.0-13-4 NTA	1.1g	1.0	0.8	13.0	2.5
1.0-15-4 NTA	1.1g	1.0	0.8	15.0	4.5

Bestell-Nr. Order No.	Gewicht Weight	dk mm	d1 mm	L mm	ML mm
--------------------------	-------------------	----------	----------	---------	----------

## Taststifte (Typ B) / Styli (Type B)

Kugel: Rubin / Ball: Ruby  
Schaft: HM / Shaft: TC

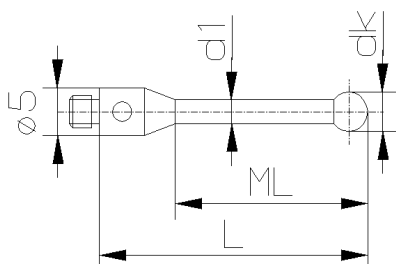


1.0-15.5-4 NTB	1.1g	1.0	0.7	15.5	7.5
1.0-20.5-4 NTB	1.1g	1.0	0.7	20.5	12.5
2.0-16-4 NTB	1.2g	2.0	1.2	16.0	8.0
2.0-26-4 NTB	1.4g	2.0	1.2	26.0	18.0
2.0-36-4 NTB	1.5g	2.0	1.2	36.0	28.0
2.0-41-4 NTB	1.6g	2.0	1.2	41.0	33.0
3.0-31.5-4 NTB	2.3g	3.0	2.0	31.5	21.5
3.0-41.5-4 NTB	2.8g	3.0	2.0	41.5	31.5
3.0-51.5-4 NTB	3.2g	3.0	2.0	51.5	41.5
4.0-32-4 NTB	3.0g	4.0	2.5	32.0	22.0
4.0-42-4 NTB	3.7g	4.0	2.5	42.0	32.0
4.0-52-4 NTB	4.5g	4.0	2.5	52.0	42.0
5.0-32.5-4 NTB	3.0g	5.0	2.5	32.5	22.5
5.0-42.5-4 NTB	3.8g	5.0	2.5	42.5	32.5
5.0-52.5-4 NTB	4.5g	5.0	2.5	52.5	42.5
6.0-33-4 NTB	4.1g	6.0	3.0	33.0	23.0
6.0-43-4 NTB	5.1g	6.0	3.0	43.0	33.0
6.0-53-4 NTB	6.1g	6.0	3.0	53.0	43.0

Bestell-Nr. Order No.	Gewicht Weight	dk mm	d1 mm	L mm	ML mm
--------------------------	-------------------	----------	----------	---------	----------

## Taststifte (Typ C) / Styli (Type C)

Kugel: Rubin / Ball: Ruby  
Schaft: Stahl / Shaft: Steel



2.0-16-4 NTC	1.1g	2.0	1.3	16.0	10.0
2.5-21-4 NTC	1.2g	2.5	1.5	21.0	15.0
3.0-21.5-4 NTC	1.3g	3.0	2.0	21.5	15.5
4.0-22-4 NTC	1.6g	4.0	2.4	22.0	16.0
6.0-28-4 NTC	2.4g	6.0	3.0	28.0	22.0

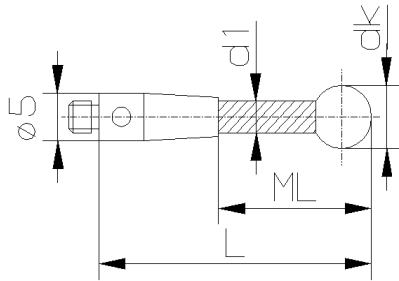
**Newton Metrology Systems**

Mob : +91 73488 98009 / 73488 93121 mailto: info@newtonmetrology.in [http:// www.newtonmetrology.in](http://www.newtonmetrology.in)  
Dimensional measurement technology : Styli for coordinate measuring machines (CMM), machine tools, height gauges

# M4 (Ø 5mm)

Anschluss-Gewinde M4 (Ø 5mm) M4 thread styli (Ø 5mm)	Bestell-Nr. Order No.	Gewicht Weight	dk mm	d1 mm	L mm	ML mm
---	--------------------------	-------------------	----------	----------	---------	----------

**Taststifte (Typ K) Keramik / Styli (Type K) Ceramic**  
 Kugel: Rubin / Ball: Ruby  
 Schaft: Keramik / Shaft: Ceramic

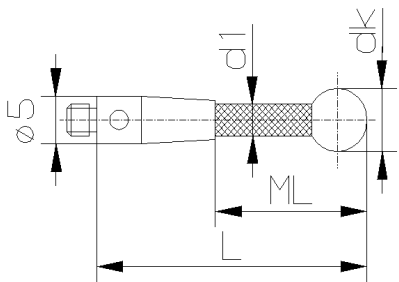


4.0-32-4 NTKE	1.6g	4.0	2.0	32.0	22.0
4.0-42-4 NTKE	1.7g	4.0	2.0	42.0	32.0
4.0-52-4 NTKE	1.8g	4.0	2.0	52.0	42.0
5.0-42.5-4 NTKE	2.2g	5.0	3.0	42.5	32.5
5.0-52.5-4 NTKE	2.5g	5.0	3.0	52.5	42.5
5.0-62.5-4 NTKE	2.8g	5.0	3.0	62.5	52.5
6.0-43-4 NTKE	2.4g	6.0	3.0	43.0	33.0
6.0-53-4 NTKE	2.7g	6.0	3.0	53.0	43.0
6.0-63-4 NTKE	3.0g	6.0	3.0	63.0	53.0

Bestell-Nr. Order No.	Gewicht Weight	dk mm	d1 mm	L mm	ML mm
--------------------------	-------------------	----------	----------	---------	----------

**Taststifte (Typ CA) Kohlefaser**  
**Styli (Type CA) Carbon Fiber**

Kugel: Rubin / Ball: Ruby  
 Schaft: CFK / Shaft: Carbon

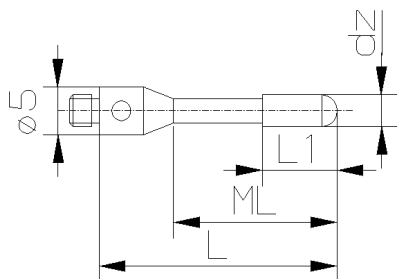


4.0-32-4 NTCA	1.5g	4.0	3.0	32.0	22.0
4.0-42-4 NTCA	1.6g	4.0	3.0	42.0	32.0
4.0-52-4 NTCA	1.7g	4.0	3.0	52.0	42.0
5.0-42.5-4 NTCA	1.6g	5.0	3.0	42.5	32.5
5.0-52.5-4 NTCA	1.8g	5.0	3.0	52.5	42.5
5.0-62.5-4 NTCA	1.9g	5.0	3.0	62.5	52.5
6.0-43-4 NTCA	1.9g	6.0	3.0	43.0	33.0
6.0-53-4 NTCA	2.0g	6.0	3.0	53.0	43.0
6.0-63-4 NTCA	2.1g	6.0	3.0	63.0	53.0

Bestell-Nr. Order No.	Gewicht Weight	dz mm	L1 mm	L mm	ML mm
--------------------------	-------------------	----------	----------	---------	----------

**Zylindertaststifte (Typ A) / Cylinder styli (Type A)**

Zylinder: Rubin / Cylinder: Ruby  
 Schaft: Stahl / Shaft: Steel

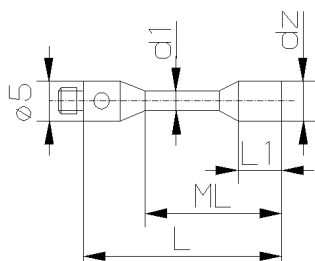


2.0-16-4 NZRA	1.1g	2.0	5.0	16.0	8.0
3.0-22-4 NZRA	1.5g	3.0	10.0	22.0	14.0
4.0-22-4 NZRA	1.8g	4.0	10.0	22.0	14.0

Bestell-Nr. Order No.	Gewicht Weight	dz mm	d1 mm	L1 mm	L mm	ML mm
--------------------------	-------------------	----------	----------	----------	---------	----------

**Zylindertaststifte (Typ H) / Cylinder styli (Type H)**

Zylinder: HM / Cylinder: TC



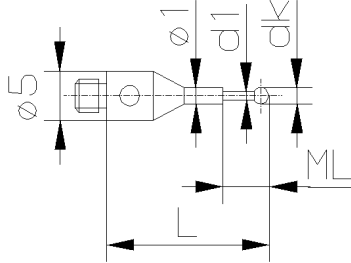
1.5-14-4 NZTH	1.2g	1.5	1.0	2.5	14.0	6.0
3.0-16-4 NZTH	1.6g	3.0	1.5	3.5	16.0	8.0

**Newton Metrology Systems**

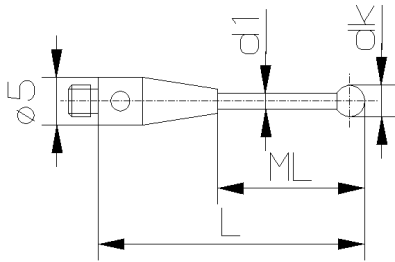
Mob : +91 73488 98009 / 73488 93121 mailto: info@newtonmetrology.in http:// www.newtonmetrology.in  
 Dimensional measurement technology : Styli for coordinate measuring machines (CMM), machine tools, height gauges

# M4 (Ø 5mm)

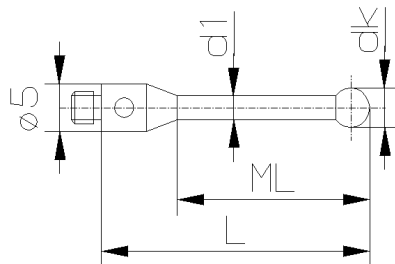
Anschluss-Gewinde M4 (Ø 5mm) M4 thread styli (Ø 5mm)	Bestell-Nr. Order No.	Gewicht Weight	dk mm	d1 mm	L mm	ML mm
<b>Taststifte (Typ A) / Styli (Type A)</b> Kugel: Rubin / Ball: Ruby Schaft: HM / Shaft: TC	0.2-13-4 NTA	1.1g	0.2	0.15	13.0	1.5
	0.25-13-4 NTA	1.1g	0.25	0.2	13.0	2.5
	0.3-13-4 NTA	1.1g	0.3	0.2	13.0	2.5
	0.4-13-4 NTA	1.1g	0.4	0.3	13.0	2.5
	0.5-13-4 NTA	1.1g	0.5	0.3	13.0	2.5
	0.6-13-4 NTA	1.1g	0.6	0.4	13.0	2.5
	0.6-15-4 NTA	1.1g	0.6	0.4	15.0	4.5
	0.7-13-4 NTA	1.1g	0.7	0.4	13.0	2.5
	0.7-15-4 NTA	1.1g	0.7	0.4	15.0	4.5
	0.8-13-4 NTA	1.1g	0.8	0.6	13.0	2.5
	0.8-15-4 NTA	1.1g	0.8	0.6	15.0	4.5
	0.9-13-4 NTA	1.1g	0.9	0.6	13.0	2.5
	0.9-15-4 NTA	1.1g	0.9	0.6	15.0	4.5
	1.0-13-4 NTA	1.1g	1.0	0.8	13.0	2.5
	1.0-15-4 NTA	1.1g	1.0	0.8	15.0	4.5



Bestell-Nr. Order No.	Gewicht Weight	dk mm	d1 mm	L mm	ML mm	
<b>Taststifte (Typ B) / Styli (Type B)</b> Kugel: Rubin / Ball: Ruby Schaft: HM / Shaft: TC	1.0-15.5-4 NTB	1.1g	1.0	0.7	15.5	7.5
	1.0-20.5-4 NTB	1.1g	1.0	0.7	20.5	12.5
	2.0-16-4 NTB	1.2g	2.0	1.2	16.0	8.0
	2.0-26-4 NTB	1.4g	2.0	1.2	26.0	18.0
	2.0-36-4 NTB	1.5g	2.0	1.2	36.0	28.0
	2.0-41-4 NTB	1.6g	2.0	1.2	41.0	33.0
	3.0-31.5-4 NTB	2.3g	3.0	2.0	31.5	21.5
	3.0-41.5-4 NTB	2.8g	3.0	2.0	41.5	31.5
	3.0-51.5-4 NTB	3.2g	3.0	2.0	51.5	41.5
	4.0-32-4 NTB	3.0g	4.0	2.5	32.0	22.0
	4.0-42-4 NTB	3.7g	4.0	2.5	42.0	32.0
	4.0-52-4 NTB	4.5g	4.0	2.5	52.0	42.0
	5.0-32.5-4 NTB	3.0g	5.0	2.5	32.5	22.5
	5.0-42.5-4 NTB	3.8g	5.0	2.5	42.5	32.5
	5.0-52.5-4 NTB	4.5g	5.0	2.5	52.5	42.5
	6.0-33-4 NTB	4.1g	6.0	3.0	33.0	23.0
	6.0-43-4 NTB	5.1g	6.0	3.0	43.0	33.0
	6.0-53-4 NTB	6.1g	6.0	3.0	53.0	43.0



Bestell-Nr. Order No.	Gewicht Weight	dk mm	d1 mm	L mm	ML mm	
<b>Taststifte (Typ C) / Styli (Type C)</b> Kugel: Rubin / Ball: Ruby Schaft: Stahl / Shaft: Steel	2.0-16-4 NTC	1.1g	2.0	1.3	16.0	10.0
	2.5-21-4 NTC	1.2g	2.5	1.5	21.0	15.0
	3.0-21.5-4 NTC	1.3g	3.0	2.0	21.5	15.5
	4.0-22-4 NTC	1.6g	4.0	2.4	22.0	16.0
	6.0-28-4 NTC	2.4g	6.0	3.0	28.0	22.0



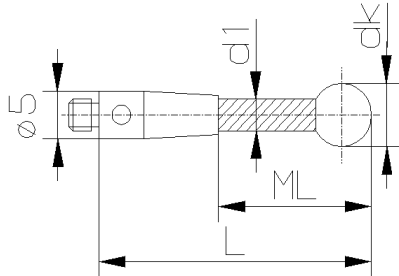
**Newton Metrology Systems**

Mob : +91 73488 98009 / 73488 93121 mailto: info@newtonmetrology.in http:// www.newtonmetrology.in  
 Dimensional measurement technology : Styli for coordinate measuring machines (CMM), machine tools, height gauges

# M4 (Ø 5mm)

Anschluss-Gewinde M4 (Ø 5mm) M4 thread styli (Ø 5mm)	Bestell-Nr. Order No.	Gewicht Weight	dk mm	d1 mm	L mm	ML mm
---	--------------------------	-------------------	----------	----------	---------	----------

**Taststifte (Typ K) Keramik / Styli (Type K) Ceramic**  
Kugel: Rubin / Ball: Ruby  
Schaft: Keramik / Shaft: Ceramic

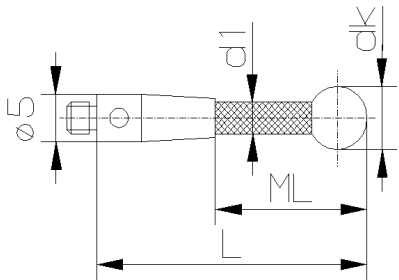


4.0-32-4 NTKE	1.6g	4.0	2.0	32.0	22.0
4.0-42-4 NTKE	1.7g	4.0	2.0	42.0	32.0
4.0-52-4 NTKE	1.8g	4.0	2.0	52.0	42.0
5.0-42.5-4 NTKE	2.2g	5.0	3.0	42.5	32.5
5.0-52.5-4 NTKE	2.5g	5.0	3.0	52.5	42.5
5.0-62.5-4 NTKE	2.8g	5.0	3.0	62.5	52.5
6.0-43-4 NTKE	2.4g	6.0	3.0	43.0	33.0
6.0-53-4 NTKE	2.7g	6.0	3.0	53.0	43.0
6.0-63-4 NTKE	3.0g	6.0	3.0	63.0	53.0

Bestell-Nr. Order No.	Gewicht Weight	dk mm	d1 mm	L mm	ML mm
--------------------------	-------------------	----------	----------	---------	----------

**Taststifte (Typ CA) Kohlefaser**  
**Styli (Type CA) Carbon Fiber**

Kugel: Rubin / Ball: Ruby  
Schaft: CFK / Shaft: Carbon

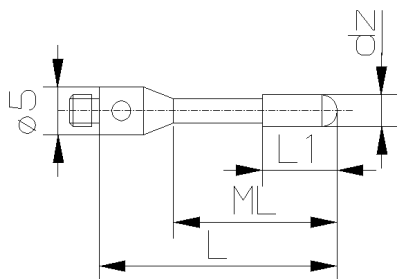


4.0-32-4 NTCA	1.5g	4.0	3.0	32.0	22.0
4.0-42-4 NTCA	1.6g	4.0	3.0	42.0	32.0
4.0-52-4 NTCA	1.7g	4.0	3.0	52.0	42.0
5.0-42.5-4 NTCA	1.6g	5.0	3.0	42.5	32.5
5.0-52.5-4 NTCA	1.8g	5.0	3.0	52.5	42.5
5.0-62.5-4 NTCA	1.9g	5.0	3.0	62.5	52.5
6.0-43-4 NTCA	1.9g	6.0	3.0	43.0	33.0
6.0-53-4 NTCA	2.0g	6.0	3.0	53.0	43.0
6.0-63-4 NTCA	2.1g	6.0	3.0	63.0	53.0

Bestell-Nr. Order No.	Gewicht Weight	dz mm	L1 mm	L mm	ML mm
--------------------------	-------------------	----------	----------	---------	----------

**Zylindertaststifte (Typ A) / Cylinder styli (Type A)**

Zylinder: Rubin / Cylinder: Ruby  
Schaft: Stahl / Shaft: Steel

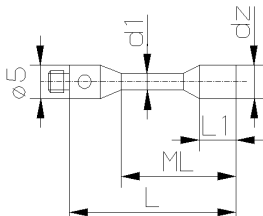


2.0-16-4 NZRA	1.1g	2.0	5.0	16.0	8.0
3.0-22-4 NZRA	1.5g	3.0	10.0	22.0	14.0
4.0-22-4 NZRA	1.8g	4.0	10.0	22.0	14.0

Bestell-Nr. Order No.	Gewicht Weight	dz mm	d1 mm	L1 mm	L mm	ML mm
--------------------------	-------------------	----------	----------	----------	---------	----------

**Zylindertaststifte (Typ H) / Cylinder styli (Type H)**

Zylinder: HM / Cylinder: TC



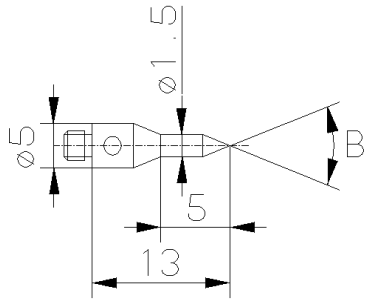
1.5-14-4 NZTH	1.2g	1.5	1.0	2.5	14.0	6.0
3.0-16-4 NZTH	1.6g	3.0	1.5	3.5	16.0	8.0

**Newton Metrology Systems**

Mob : +91 73488 98009 / 73488 93121 mailto: info@newtonmetrology.in [http:// www.newtonmetrology.in](http://www.newtonmetrology.in)  
Dimensional measurement technology : Styli for coordinate measuring machines (CMM), machine tools, height gauges

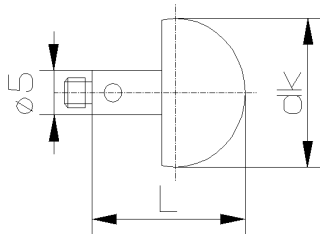
# M4 (Ø 5mm)

Anschluss-Gewinde M4 (Ø 5mm) <i>M4 thread styli (Ø 5mm)</i>	Bestell-Nr. <i>Order No.</i>	Spitze <i>Point</i>	Gewicht <i>Weight</i>	β
<b>Tastspitzen / Pointed styli</b>	30-13-4 NTS	HM / TC	1.2g	30°
	60-13-4 NTS	HM / TC	1.2g	60°



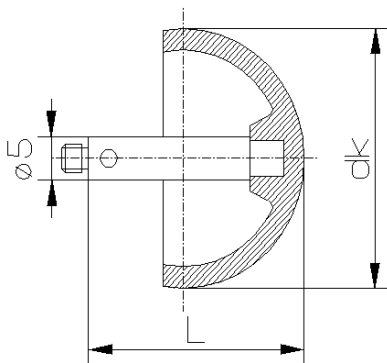
Bestell-Nr. <i>Order No.</i>	Gewicht <i>Weight</i>	dk mm	L mm
---------------------------------	--------------------------	----------	---------

<b>Keramikkugel-Taster / Ceramic ball styli</b>	Bestell-Nr. <i>Order No.</i>	Gewicht <i>Weight</i>	dk mm	L mm
Kugel: Keramik / <i>Ball: Ceramic</i> Schaft: Stahl / <i>Shaft: Steel</i>	8.0-10-4 NKK	1.7g	8.0	10.0
	10.0-11-4 NKK	2.3g	10.0	11.0



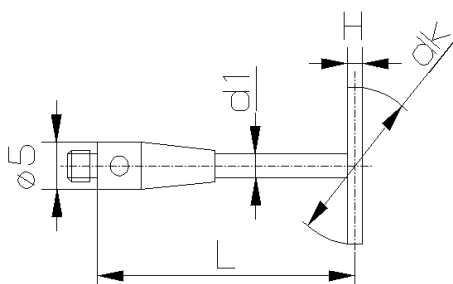
Bestell-Nr. <i>Order No.</i>	Gewicht <i>Weight</i>	dk mm	L mm
---------------------------------	--------------------------	----------	---------

<b>Hohle Keramikkugel-Taster (Typ E) Hollow ceramic ball styli (Type E)</b>	Bestell-Nr. <i>Order No.</i>	Gewicht <i>Weight</i>	dk mm	L mm
Kugel: Keramik / <i>Ball: Ceramic</i> Schaft: Stahl / <i>Shaft: Steel</i>	18.0-16-4 NHKE	6.1g	18.0	16.0
	24.0-19-4 NHKE	9.9g	24.0	19.0
	30.0-22-4 NHKE	14.0g	30.0	22.0



Bestell-Nr. <i>Order No.</i>	Gewicht <i>Weight</i>	dk mm	d1 mm	L mm	H mm
---------------------------------	--------------------------	----------	----------	---------	---------

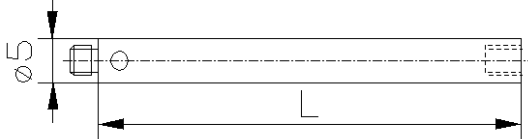
<b>Kugelscheiben-Taststifte / Ball disc styli</b>	Bestell-Nr. <i>Order No.</i>	Gewicht <i>Weight</i>	dk mm	d1 mm	L mm	H mm
Scheibe: Keramik / <i>Disc: Ceramic</i> Schaft: HM / <i>Shaft: TC</i>	5.0-20-4 NKSK	1.5g	5.0	1.5	20.0	0.5
	10.0-25-4 NKSK	2.3g	10.0	2.0	25.0	0.8
	14.0-25-4 NKSK	2.7g	14.0	2.0	25.0	1.0



on Metrology Systems

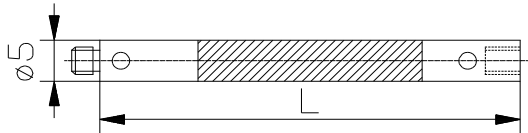
# M4 (Ø 5mm)

<b>Anschluss-Gewinde M4 (Ø 5mm)</b> <i>M4 thread styli (Ø 5mm)</i>	<b>Bestell-Nr.</b> <i>Order No.</i>	<b>Material</b> <i>Material</i>	<b>Gewicht</b> <i>Weight</i>	<b>L</b> <i>mm</i>
<b>Verlängerungen Stahl / Extensions Steel</b>	10-4 NV	Stahl / <i>Steel</i>	1.1g	10.0
	20-4 NV	Stahl / <i>Steel</i>	2.6g	20.0
	35-4 NV	Stahl / <i>Steel</i>	4.9g	35.0



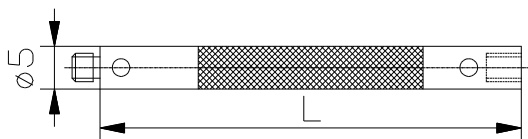
<b>Bestell-Nr.</b> <i>Order No.</i>	<b>Material</b> <i>Material</i>	<b>Gewicht</b> <i>Weight</i>	<b>L</b> <i>mm</i>
--	------------------------------------	---------------------------------	-----------------------

<b>Verlängerungen Keramik / Extensions Ceramic</b>	50-4 NVK	Keramik / <i>Ceramic</i>	3.9g	50.0
	60-4 NVK	Keramik / <i>Ceramic</i>	4.6g	60.0
	70-4 NVK	Keramik / <i>Ceramic</i>	5.3g	70.0
	80-4 NVK	Keramik / <i>Ceramic</i>	5.8g	80.0
	90-4 NVK	Keramik / <i>Ceramic</i>	6.4g	90.0
	100-4 NVK	Keramik / <i>Ceramic</i>	7.0g	100.0



<b>Bestell-Nr.</b> <i>Order No.</i>	<b>Material</b> <i>Material</i>	<b>Gewicht</b> <i>Weight</i>	<b>L</b> <i>mm</i>
--	------------------------------------	---------------------------------	-----------------------

<b>Verlängerungen Kohlefaser / Extensions Carbon Fiber</b>	50-4 NVCA	CFK / <i>Carbon</i>	2.5g	50.0
	60-4 NVCA	CFK / <i>Carbon</i>	2.9g	60.0
	70-4 NVCA	CFK / <i>Carbon</i>	3.2g	70.0
	80-4 NVCA	CFK / <i>Carbon</i>	3.5g	80.0
	90-4 NVCA	CFK / <i>Carbon</i>	3.8g	90.0
	100-4 NVCA	CFK / <i>Carbon</i>	3.9g	100.0



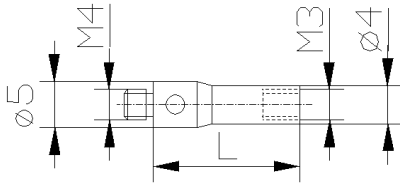
**Newton Metrology Systems**

Mob : +91 73488 98009 / 73488 93121 mailto: info@newtonmetrology.in [http:// www.newtonmetrology.in](http://www.newtonmetrology.in)  
Dimensional measurement technology : Styli for coordinate measuring machines (CMM), machine tools, height gauges



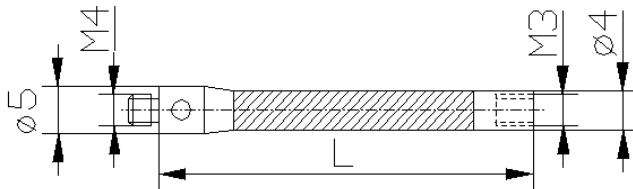
# M4 (Ø 5mm)

Anschluss-Gewinde M4 (Ø 5mm) / M4 thread styli (Ø 5mm)	Bestell-Nr. Order No.	Material Material	Gewicht Weight	L mm
Verlängerungen Stahl (Adapter M4 - M3) Extensions Steel (Adaptor M4 - M3)	20-4-3 NV	Stahl / Steel	2.0g	20.0



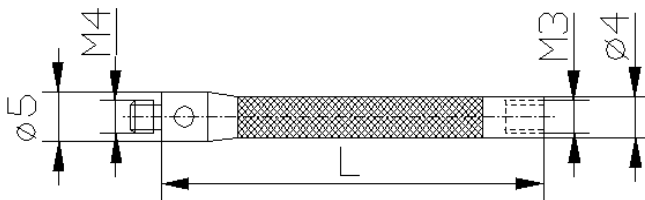
Bestell-Nr. Order No.	Material Material	Gewicht Weight	L mm
--------------------------	----------------------	-------------------	---------

Verlängerungen Keramik (Adapter M4 - M3) Extensions Ceramic (Adaptor M4 - M3)	50-4-3 NVK	Keramik / Ceramic	3.6g	50.0
	75-4-3 NVK	Keramik / Ceramic	5.7g	75.0
	100-4-3 NVK	Keramik / Ceramic	6.8g	100.0



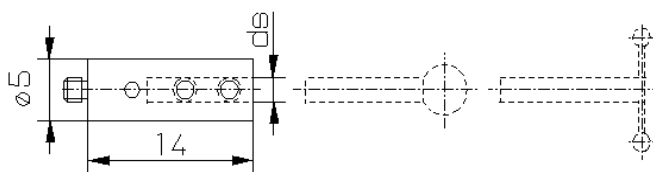
Bestell-Nr. Order No.	Material Material	Gewicht Weight	L mm
--------------------------	----------------------	-------------------	---------

Verlängerungen Kohlefaser (Adapter M4 - M3) Extensions Carbon Fiber (Adaptor M4 - M3)	50-4-3 NVCA	CFK / Carbon	2.3g	50.0
	75-4-3 NVCA	CFK / Carbon	3.0g	75.0
	100-4-3 NVCA	CFK / Carbon	3.7g	100.0



Bestell-Nr. Order No.	Material Material	Gewicht Weight	ds mm
--------------------------	----------------------	-------------------	----------

Taststift-Halter (Typ Z) / Holders for styli (Type Z)	1.0-4 NHZ	Stahl / Steel	2.2g	1.0
	1.5-4 NHZ	Stahl / Steel	2.1g	1.5
	2.0-4 NHZ	Stahl / Steel	2.0g	2.0



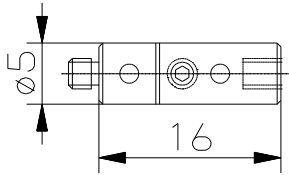
Zur Aufnahme der **Taststifte (Typ FM), (Typ F), (Typ N)** und **T-Taster (Typ H)** (Seite 6+8+9).

For use with **Styli (Type FM), (Type F), (Type N)** and **T-Styli (Type H)** (Page 6+8+9).

## Newton Metrology Systems

# M4 (Ø 5mm)

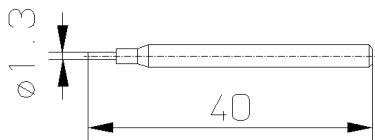
<b>Anschluss-Gewinde M4 (Ø 5mm) / M4 thread styli (Ø 5mm)</b>	<b>Bestell-Nr.</b> <i>Order No.</i>	<b>Material</b> <i>Material</i>	<b>Gewicht</b> <i>Weight</i>
<b>Drehstück / Rotating adaptor</b>	5.0-16-4 NDS	Stahl / <i>Steel</i>	1.9g



Mit Hilfe des Drehstücks können die angebauten Tastelemente ausgerichtet werden.

*Rotating adaptor allows styli positioning.*

<b>Werkzeuge für Komponenten mit Anschluss-Gewinde M4 (Ø 5mm) / Tools for M4 (Ø 5mm) thread components</b>	<b>Bestell-Nr.</b> <i>Order No.</i>	<b>Bezeichnung</b> <i>Description</i>
<b>Stiftschlüssel / Pin key</b>	1.3 NWST	Ø 1.3mm für Komponenten mit Gewinde M4 <i>Ø 1.3mm for M4 thread components</i>



	<b>Bestell-Nr.</b> <i>Order No.</i>	<b>Inhalt</b> <i>Contents</i>
<b>Schraubensortiment (Ersatzschrauben)</b> <i>Screws assortment (Replacement screws)</i>	4-4 NSS	4 Teile / <i>4 parts</i>

<b>Schraubensortiment bestehend aus:</b>
4 Stk. Gewindestifte M2x2

<b>Screws assortment:</b>
4 pcs Set screw M2x2

	<b>Bestell-Nr.</b> <i>Order No.</i>	<b>Bezeichnung</b> <i>Description</i>
<b>Leere Holzetuis / Empty wooden cases</b>	24-4 NHSC	Holzetui mit Einlegeplatte für maximum 24 Teile (Tastelemente mit Gewinde M4 (Ø 5mm)) <i>Wooden case with plate for max. 24 parts</i> (Styli mit M4 (Ø 5mm) thread)

**Newton Metrology Systems**

Mob : +91 73488 98009 / 73488 93121 mailto: info@newtonmetrology.in [http:// www.newtonmetrology.in](http://www.newtonmetrology.in)  
Dimensional measurement technology : Styli for coordinate measuring machines (CMM), machine tools, height gauges

# M4 (Ø 7mm)

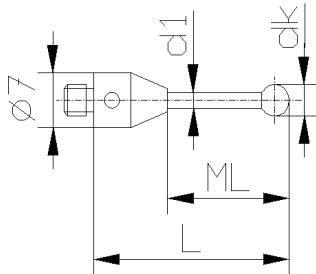
<b>Tastelemente / <i>Styli</i></b>	54-55
<b>Verlängerungen / <i>Extensions</i></b>	56
<b>Halter / <i>Holders for styli</i></b>	56
<b>Werkzeuge / <i>Tools</i></b>	57
<b>Tastelemente Set / <i>Styli sets</i></b>	57

# M4 (Ø 7mm)

Anschluss-Gewinde M4 (Ø 7mm) M4 thread styli (Ø 7mm)	Bestell-Nr. Order No.	Gewicht Weight	dk mm	d1 mm	L mm	ML mm
---	--------------------------	-------------------	----------	----------	---------	----------

## Taststifte (Typ B) / Styli (Type B)

Kugel: Rubin / Ball: Ruby  
Schaft: HM / Shaft: TC

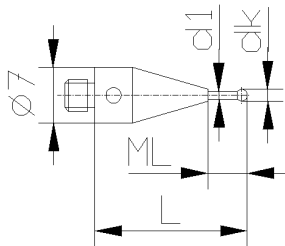


1.0-20.5-7 NTB	2.2g	1.0	0.7	20.5	10.5
2.0-21-7 NTB	2.5g	2.0	1.5	21.0	11.0
2.0-51-7 NTB	3.3g	2.0	1.5	51.0	41.0
3.0-21.5-7 NTB	2.6g	3.0	1.5	21.5	11.5
3.0-51.5-7 NTB	4.4g	3.0	2.0	51.5	39.5
4.0-22-7 NTB	3.1g	4.0	2.0	22.0	10.0
4.0-52-7 NTB	4.5g	4.0	2.0	52.0	40.0
5.0-22.5-7 NTB	3.7g	5.0	2.5	22.5	8.5
5.0-52.5-7 NTB	5.8g	5.0	2.5	52.5	38.5
6.0-23-7 NTB	3.8g	6.0	2.5	23.0	9.0
6.0-53-7 NTB	5.9g	6.0	2.5	53.0	39.0

Bestell-Nr. Order No.	Gewicht Weight	dk mm	d1 mm	L mm	ML mm
--------------------------	-------------------	----------	----------	---------	----------

## Taststifte (Typ BS) / Styli (Type BS)

Kugel: Rubin / Ball: Ruby  
Schaft: HM / Shaft: TC

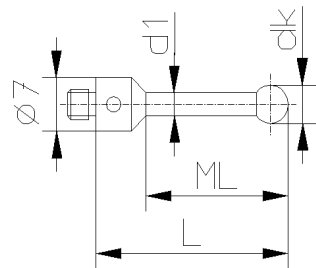


0.5-20-7 NTBS	2.8g	0.5	0.3	20.0	2.5
1.0-20-7 NTBS	2.9g	1.0	0.8	20.0	5.0

Bestell-Nr. Order No.	Gewicht Weight	dk mm	d1 mm	L mm	ML mm
--------------------------	-------------------	----------	----------	---------	----------

## Taststifte (Typ C) / Styli (Type C)

Kugel: Rubin / Ball: Ruby  
Schaft: Stahl / Shaft: Steel



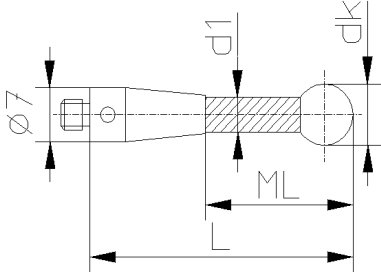
2.0-20-7 NTC	2.2g	2.0	1.5	20.0	9.0
3.0-20-7 NTC	2.0g	3.0	2-3	20.0	15.0
4.0-20-7 NTC	2.2g	4.0	3.0	20.0	15.0
5.0-12.5-7 NTC	1.9g	5.0	3.0	12.5	7.5
5.0-20-7 NTC	2.5g	5.0	3.5	20.0	15.0
5.0-22.5-7 NTC	2.5g	5.0	3.0	22.5	17.5
5.0-32.5-7 NTC	3.0g	5.0	3.0	32.5	27.5
5.0-52.5-7 NTC	7.1g	5.0	4.0	52.5	36.5
5.0-102.5-7 NTC	12.1g	5.0	4.0	102.5	86.5
5.0-152.5-7 NTC	17.0g	5.0	4.0	152.5	136.5
6.0-20-7 NTC	3.1g	6.0	4.5	20.0	15.5
6.0-28-7 NTC	2.9g	6.0	3.0	28.0	23.0
8.0-20-7 NTC	4.1g	8.0	5.5	20.0	15.5

**Newton Metrology Systems**

Mob : +91 73488 98009 / 73488 93121 mailto: info@newtonmetrology.in http:// www.newtonmetrology.in  
Dimensional measurement technology : Styli for coordinate measuring machines (CMM), machine tools, height gauges

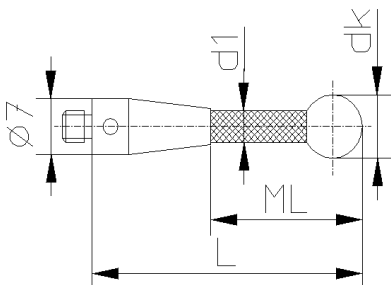
# M4 (Ø 7mm)

Anschluss-Gewinde M4 (Ø 7mm) <i>M4 thread styli (Ø 7mm)</i>	Bestell-Nr. <i>Order No.</i>	Gewicht <i>Weight</i>	dk mm	d1 mm	L mm	ML mm
<b>Taststifte (Typ K) Keramik</b> <b>Styli (Type K) Ceramic</b> Kugel: Rubin / <i>Ball: Ruby</i> Schaft: Keramik / <i>Shaft: Ceramic</i>	4.0-52-7 NTKE	4.2g	4.0	3.0	52.0	36.0
	4.0-77-7 NTKE	4.9g	4.0	3.0	77.0	61.0
	4.0-102-7 NTKE	5.6g	4.0	3.0	102.0	86.0
	5.0-52.5-7 NTKE	4.6g	5.0	3.5	52.5	36.5
	5.0-77.5-7 NTKE	5.5g	5.0	3.5	77.5	61.5
	5.0-102.5-7 NTKE	6.5g	5.0	3.5	102.5	86.5
	6.0-50-7 NTKE	4.6g	6.0	4.5	50.0	34.0
	6.0-53-7 NTKE	4.9g	6.0	4.5	53.0	37.0
	6.0-78-7 NTKE	5.7g	6.0	4.5	78.0	62.0
	6.0-100-7 NTKE	6.2g	6.0	4.5	100.0	84.0
	6.0-103-7 NTKE	6.3g	6.0	4.5	103.0	87.0
	6.0-153-7 NTKE	8.0g	6.0	4.5	153.0	137.0
	8.0-54-7 NTKE	6.2g	8.0	4.5	54.0	38.0
	8.0-79-7 NTKE	7.7g	8.0	4.5	79.0	63.0
	8.0-104-7 NTKE	7.0g	8.0	4.5	104.0	88.0
8.0-154-7 NTKE	8.6g	8.0	4.5	154.0	138.0	
8.0-204-7 NTKE	10.2g	8.0	4.5	204.0	188.0	



Bestell-Nr. <i>Order No.</i>	Gewicht <i>Weight</i>	dk mm	d1 mm	L mm	ML mm
4.0-52-7 NTCA	3.4g	4.0	3.0	52.0	36.0
6.0-53-7 NTCA	3.9g	6.0	4.0	53.0	37.0
6.0-103-7 NTCA	5.0g	6.0	4.0	103.0	87.0
6.0-153-7 NTCA	5.9g	6.0	4.0	153.0	137.0
6.0-203-7 NTCA	6.9g	6.0	4.0	203.0	187.0
6.0-303-7 NTCA	8.8g	6.0	4.0	303.0	287.0
8.0-304-7 NTCA	8.9g	8.0	4.0	304.0	288.0

**Taststifte (Typ CA) Kohlefaser**  
**Styli (Type CA) Carbon Fiber**  
 Kugel: Rubin / *Ball: Ruby*  
 Schaft: CFK / *Shaft: Carbon*



Bestell-Nr. <i>Order No.</i>	Gewicht <i>Weight</i>	dk mm	d1 mm	L mm	ML mm
---------------------------------	--------------------------	----------	----------	---------	----------

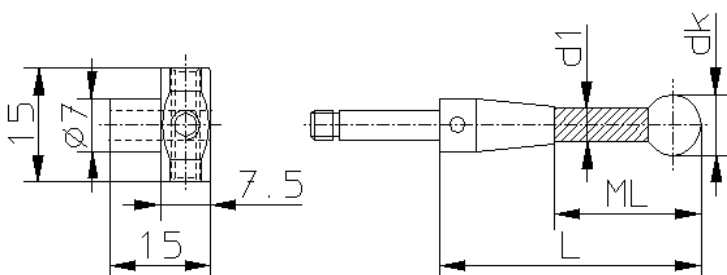
**Taststift-Halter drehbar / Holders for styli rotary**

15.0-15-7 NTHL	12.3g				
----------------	-------	--	--	--	--

**Taststifte (Typ KL) Keramik**  
**Styli (Type KL) Ceramic**

6.0-53-7 NTKL	6.2g	6.0	4.5	53.0	37.0
6.0-103-7 NTKL	7.7g	6.0	4.5	103.0	87.0

Kugel: Rubin / *Ball: Ruby*  
 Schaft: Keramik / *Shaft: Ceramic*



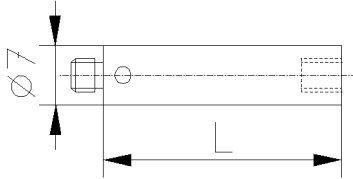
**Newton Metrology Systems**

Mob : +91 73488 98009 / 73488 93121 mailto: info@newtonmetrology.in [http:// www.newtonmetrology.in](http://www.newtonmetrology.in)  
 Dimensional measurement technology : Styli for coordinate measuring machines (CMM), machine tools, height gauges

# M4 (Ø 7mm)

Anschluss-Gewinde M4 (Ø 7mm) / M4 thread (Ø 7mm)	Bestell-Nr. Order No.	Material Material	Gewicht Weight	L mm
--	--------------------------	----------------------	-------------------	---------

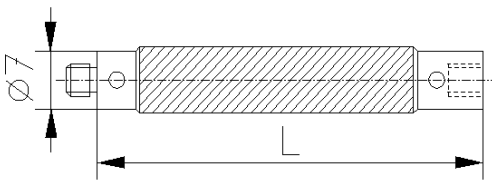
## Verlängerungen Stahl / Extensions Steel



10-7 NV	Stahl / Steel	2.5g	10.0
15-7 NV	Stahl / Steel	3.9g	15.0
20-7 NV	Stahl / Steel	5.4g	20.0
30-7 NV	Stahl / Steel	8.4g	30.0
35-7 NV	Stahl / Steel	9.9g	35.0
50-7 NV	Stahl / Steel	14.4g	50.0

Bestell-Nr. Order No.	Material Material	Gewicht Weight	L mm
--------------------------	----------------------	-------------------	---------

## Verlängerungen Keramik / Extensions Ceramic

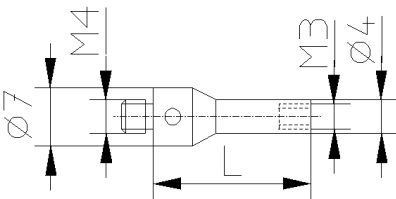


30-7 NVK	Keramik / Ceramic	6.3g	30.0
50-7 NVK	Keramik / Ceramic	8.9g	50.0
100-7 NVK	Keramik / Ceramic	14.0g	100.0

Bestell-Nr. Order No.	Material Material	Gewicht Weight	L mm
--------------------------	----------------------	-------------------	---------

## Verlängerungen Stahl (Adapter M4 - M3) Extensions Steel (Adaptor M4 - M3)

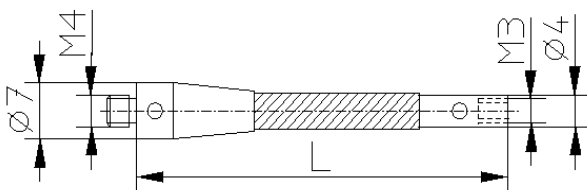
20-7-3 NV	Stahl / Steel	2.8g	20.0
-----------	---------------	------	------



Bestell-Nr. Order No.	Material Material	Gewicht Weight	L mm
--------------------------	----------------------	-------------------	---------

## Verlängerungen Keramik (Adapter M4 - M3) Extensions Ceramic (Adaptor M4 - M3)

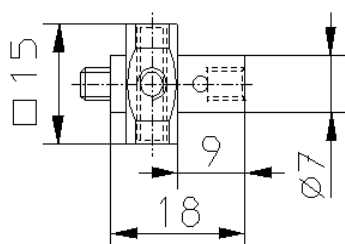
50-7-3 NVK	Keramik / Ceramic	5.2g	50.0
75-7-3 NVK	Keramik / Ceramic	6.8g	75.0
100-7-3 NVK	Keramik / Ceramic	8.4g	100.0



Bestell-Nr. Order No.	Material Material	Gewicht Weight
--------------------------	----------------------	-------------------

## Taststift-Halter drehbar 5-Wege (Typ F) Holders for styli rotary 5-Way (Type F)

15.0-18-7 NTHF	Stahl / Steel	11.8g
----------------	---------------	-------



Zur Aufnahme der **Taststifte mit Gewinde M4**.  
Mit Hilfe des integrierten Drehstücks können die  
angebauten Tastelemente ausgerichtet werden.

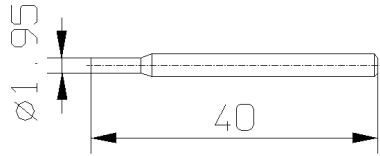
For use with **M4 thread styli**.  
A built-in rotating adaptor allows styli positioning.

**Newton Metrology Systems**

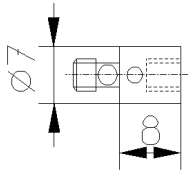
Mob : +91 73488 98009 / 73488 93121 mailto: info@newtonmetrology.in [http:// www.newtonmetrology.in](http://www.newtonmetrology.in)  
Dimensional measurement technology : Styli for coordinate measuring machines (CMM), machine tools, height gauges

# M4 (Ø 7mm)

Werkzeuge für Komponenten mit Anschluss-Gewinde M4 (Ø 7mm) / Tools for M4 (Ø 7mm) thread components	Bestell-Nr. Order No.	Bezeichnung Description
Stiftschlüssel / Pin key	1.95 NWST	Ø 1.95mm für Komponenten mit Gewinde M4 Ø 1.95mm for M4 thread components



	Bestell-Nr. Order No.	Material Material	Gewicht Weight
Sollbruchstücke Stahl / Crash protection adaptors Steel	8-7 NSR	Stahl / Steel	1.9g



	Bestell-Nr. Order No.	Bezeichnung Description
Leere Holzetuis / Empty wooden cases	18-7 NESH	Holzetui mit Einlegeplatte für maximum 18 Teile (Tastelemente mit Gewinde M4 (Ø 7mm)) Wooden case with plate for max. 18 parts (Styli with M4 (Ø 7mm) thread)
	43-7 NHSG	Holzetui mit Einlegeplatte für maximum 43 Teile (Tastelemente mit Gewinde M4 (Ø 7mm)) Wooden case with plate for max. 43 parts (Styli with M4 (Ø 7mm) thread)

**Newton Metrology Systems**

No.171,2<sup>nd</sup> Floor,3<sup>rd</sup> Main Road  
New BDA Layout, Avalahalli  
Girinagar , Bangalore  
560085, India.

Mob. +91 73488 98009

Mob. +91 73488 93121

[info@newtonmetrology.in](mailto:info@newtonmetrology.in)  
[www.newtonmetrology.in](http://www.newtonmetrology.in)

