

# ***STYLI and ACCESSORIES***

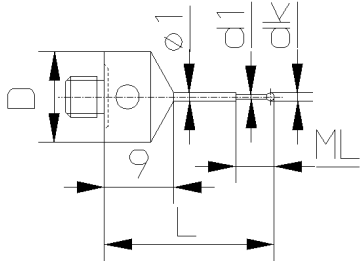


# **M5 (Ø 11mm)**

<b>Tastelemente / <i>Styli</i></b>	60-66
<b>Halter / <i> HOLDERS for styli</i></b>	67-68
<b>Verlängerungen / <i>Extensions</i></b>	69-70
<b>Würfel / <i>Cubes</i></b>	71-72
<b>Gelenke / <i>Knuckle joints</i></b>	73
<b>Drehstücke / <i>Rotating adaptors</i></b>	73
<b>Schrauben für Würfel / <i>Screws for cubes</i></b>	74
<b>Werkzeuge / <i>Tools</i></b>	75
<b>Tastelemente Set / <i>Styli sets</i></b>	76

# M5 (Ø 11mm)

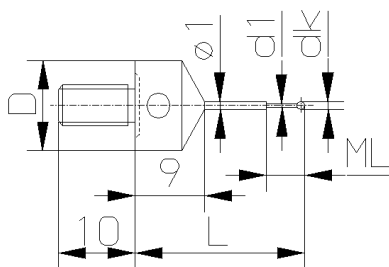
Anschluss-Gewinde M5 / M5 thread styli	Bestell-Nr. Order No.	Gewicht Weight	D mm	dk mm	d1 mm	L mm	ML mm
<b>Taststifte (Typ S) / Styli (Type S)</b> Kugel: Rubin / Ball: Ruby Schaft: HM / Shaft: TC	0.2-21.8-11 NTS	5.3g	11	0.2	0.15	21.8	1.5
	0.25-21.8-11 NTS	5.3g	11	0.25	0.2	21.8	2.5
	0.3-21.8-11 NTS	5.3g	11	0.3	0.2	21.8	2.5
	0.4-21.9-11 NTS	5.3g	11	0.4	0.3	21.9	2.5
	0.5-22.0-11 NTS	5.3g	11	0.5	0.3	22.0	2.5
	0.6-22.1-11 NTS	5.3g	11	0.6	0.4	22.1	4.5
	0.7-22.2-11 NTS	5.3g	11	0.7	0.4	22.2	4.5
	0.8-22.3-11 NTS	5.3g	11	0.8	0.6	22.3	4.5
	0.9-22.4-11 NTS	5.3g	11	0.9	0.6	22.4	4.5
	1.0-22.5-11 NTS	5.3g	11	1.0	0.8	22.5	4.5



Bestell-Nr. Order No.	Gewicht Weight	D mm	dk mm	d1 mm	L mm	ML mm
0.2-21.8-11 NTSL	5.9g	11	0.2	0.15	21.8	1.5
0.25-21.8-11 NTSL	5.9g	11	0.25	0.2	21.8	2.5
0.3-21.8-11 NTSL	6.0g	11	0.3	0.2	21.8	2.5
0.4-21.9-11 NTSL	6.0g	11	0.4	0.3	21.9	2.5
0.5-22.0-11 NTSL	6.0g	11	0.5	0.3	22.0	2.5
0.6-22.1-11 NTSL	6.0g	11	0.6	0.4	22.1	4.5
0.7-22.2-11 NTSL	6.0g	11	0.7	0.4	22.2	4.5
0.8-22.3-11 NTSL	6.0g	11	0.8	0.6	22.3	4.5
0.9-22.4-11 NTSL	6.0g	11	0.9	0.6	22.4	4.5
1.0-22.5-11 NTSL	6.0g	11	1.0	0.8	22.5	4.5

## Taststifte langes Gewinde (Typ SL) Styli with extended thread (Type SL)

Kugel: Rubin / Ball: Ruby  
Schaft: HM / Shaft: TC



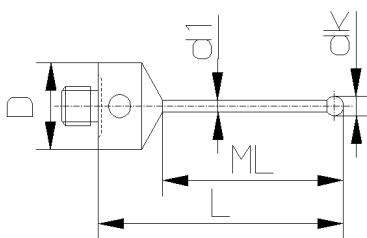
Zur Aufnahme der Tastscheibe mit Gewinde M5 (Seite 65).

For use with Disc styli with M5 thread (Page 65).

Bestell-Nr. Order No.	Gewicht Weight	D mm	dk mm	d1 mm	L mm	ML mm
1.35-32.9-11 NTS	5.4g	11	1.35	1.0	32.9	23.9
1.5-33-11 NTS	5.4g	11	1.5	1.0	33.0	24.0
2.0-33.5-11 NTS	5.8g	11	2.0	1.5	33.5	24.5
2.5-34-11 NTS	5.9g	11	2.5	1.5	34.0	25.0
3.0-34.5-18 NTS	20.9g	18	3.0	2.0	34.5	16.5
5.0-43.5-18 NTS	24.5g	18	5.0	3.5	43.5	25.5

## Taststifte (Typ S) / Styli (Type S)

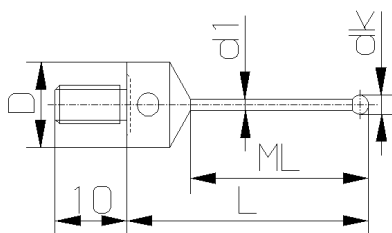
Kugel: Rubin / Ball: Ruby  
Schaft: HM / Shaft: TC



Bestell-Nr. Order No.	Gewicht Weight	D mm	dk mm	d1 mm	L mm	ML mm
1.35-32.9-11 NTSL	6.1g	11	1.35	1.0	32.9	23.9
1.5-33-11 NTSL	6.1g	11	1.5	1.0	33.0	24.0
2.0-33.5-11 NTSL	6.4g	11	2.0	1.5	33.5	24.5
2.5-34-11 NTSL	6.4g	11	2.5	1.5	34.0	25.0
3.0-34.5-18 NTSL	21.4g	18	3.0	2.0	34.5	16.5
5.0-43.5-18 NTSL	25.1g	18	5.0	3.5	43.5	25.5

## Taststifte langes Gewinde (Typ SL) Styli with extended thread (Type SL)

Kugel: Rubin / Ball: Ruby  
Schaft: HM / Shaft: TC



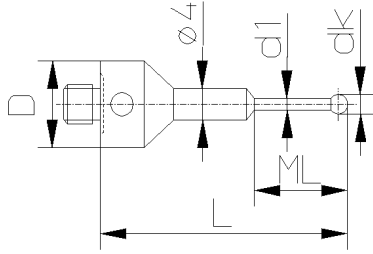
Zur Aufnahme der Tastscheibe mit Gewinde M5 (Seite 65).

For use with Disc styli with M5 thread (Page 65).

newton Metrology Systems

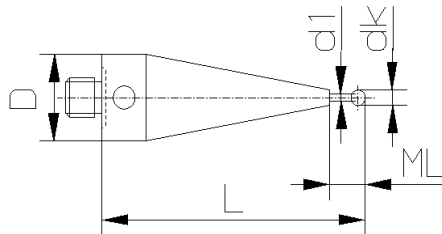
# M5 (Ø 11mm)

Anschluss-Gewinde M5 / M5 thread styli	Bestell-Nr. Order No.	Gewicht Weight	D mm	dk mm	d1 mm	L mm	ML mm
<b>Taststifte / Styli</b> Kugel: Rubin / Ball: Ruby Schaft: HM / Shaft: TC	0.2-32-11 NTB	7.0g	11	0.2	0.15	32.0	1.5
	0.25-32-11 NTB	7.0g	11	0.25	0.2	32.0	2.5
	0.3-32-11 NTB	7.0g	11	0.3	0.2	32.0	2.5
	0.4-32-11 NTB	7.0g	11	0.4	0.3	32.0	2.5
	0.5-32-11 NTB	7.0g	11	0.5	0.3	32.0	2.5
	0.6-32-11 NTB	7.0g	11	0.6	0.4	32.0	4.5
	0.7-32-11 NTB	7.0g	11	0.7	0.4	32.0	4.5
	0.8-32-11 NTB	6.5g	11	0.8	0.6	32.0	12.0
	0.9-32-11 NTB	6.5g	11	0.9	0.6	32.0	12.0
	1.0-32-11 NTB	6.6g	11	1.0	0.8	32.0	12.0
	1.35-32-11 NTB	6.6g	11	1.35	1.0	32.0	12.0
	1.35-44-11 NTB	7.3g	11	1.35	1.0	44.0	19.0
	1.5-32-11 NTB	6.6g	11	1.5	1.0	32.0	12.0
	1.5-44-11 NTB	7.2g	11	1.5	1.0	44.0	19.0
	2.0-32-11 NTB	6.9g	11	2.0	1.5	32.0	12.0
	2.0-44-11 NTB	7.5g	11	2.0	1.5	44.0	19.0
	2.0-58-11 NTB	7.8g	11	2.0	1.5	58.0	33.0
	2.5-32-11 NTB	6.9g	11	2.5	1.5	32.0	12.0
	2.5-44-11 NTB	7.6g	11	2.5	1.5	44.0	19.0
	2.5-58-11 NTB	7.9g	11	2.5	1.5	58.0	33.0



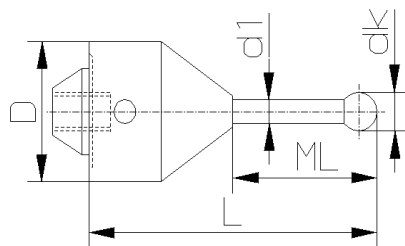
Bestell-Nr. Order No.	Gewicht Weight	D mm	dk mm	d1 mm	L mm	ML mm
1.0-55-11 NTF	17.8g	11	1.0	0.8	55.0	4.0
1.5-55-11 NTF	18.0g	11	1.5	1.0	55.0	5.0
2.0-55-11 NTF	19.1g	11	2.0	1.5	55.0	5.0
2.5-55-11 NTF	18.9g	11	2.5	1.5	55.0	5.0
3.5-55-11 NTF	18.1g	11	3.5	2.0	55.0	10.0

**Taststifte / Styli**  
 Kugel: Rubin / Ball: Ruby  
 Schaft: HM / Shaft: TC



Bestell-Nr. Order No.	Gewicht Weight	D mm	dk mm	d1 mm	L mm	ML mm
3.0-50-18 NTBK	15.0g	18	3.0	2.0	50.0	25.0
3.0-75-18 NTBK	17.4g	18	3.0	2.0	75.0	35.0
3.0-115-18 NTBK	56.4g	18	3.0	2.0	115.0	18.0
5.0-75-18 NTBK	20.0g	18	5.0	3.5	75.0	35.0
5.0-100-18 NTBK	26.0g	18	5.0	3.5	100.0	60.0
8.0-80-18 NTBK	23.1g	18	8.0	6.0	80.0	55.0
8.0-100-18 NTBK	45.0g	18	8.0	6.0	100.0	60.0
8.0-115-18 NTBK	52.8g	18	8.0	6.0	115.0	75.0
8.0-140-18 NTBK	65.0g	18	8.0	6.0	140.0	100.0

**Taststifte mit Konus / Styli with conus**  
 Kugel: Rubin / Ball: Ruby  
 Schaft: HM / Shaft: TC



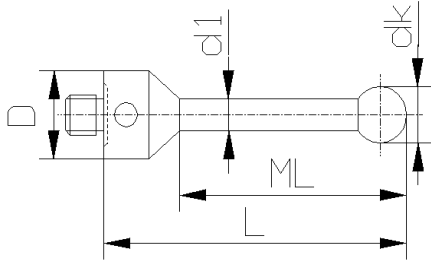
Zum direkten Einschrauben an den messenden Tastkopf mit konischer Aufnahme.

*For use with static probe head with conical holding fixture.*

## Newton Metrology Systems

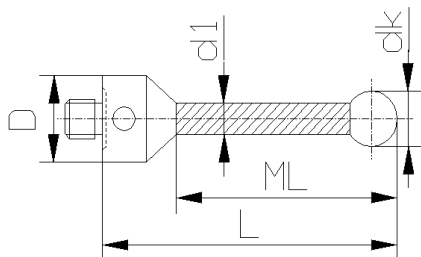
# M5 (Ø 11mm)

Anschluss-Gewinde M5 / M5 thread styli	Bestell-Nr. Order No.	Gewicht Weight	D mm	dk mm	d1 mm	L mm	ML mm
<b>Taststifte (Typ B) / Styli (Type B)</b> Kugel: Rubin / Ball: Ruby Schaft: HM / Shaft: TC	2.0-20-11 NTB	5.7g	11	2.0	1.5	20.0	10.0
	2.0-40-11 NTB	6.3g	11	2.0	1.5	40.0	30.0
	2.5-20-11 NTB	5.7g	11	2.5	1.5	20.0	10.0
	3.0-25-11 NTB	6.2g	11	3.0	2.0	25.0	15.0
	3.0-33.5-11 NTB	6.6g	11	3.0	2.0	33.5	23.5
	3.0-40-11 NTB	7.0g	11	3.0	2.0	40.0	30.0
	3.0-50-11 NTB	7.4g	11	3.0	2.0	50.0	40.0
	3.0-58-11 NTB	7.7g	11	3.0	2.0	58.0	48.0
	4.0-33.5-11 NTB	6.7g	11	4.0	2.0	33.5	23.5
	4.0-40-11 NTB	7.0g	11	4.0	2.0	40.0	30.0
	4.0-50-11 NTB	7.5g	11	4.0	2.0	50.0	40.0
	4.0-64-11 NTB	8.1g	11	4.0	2.0	64.0	54.0
	5.0-40-11 NTB	10.0g	11	5.0	3.5	40.0	30.0
	5.0-50-11 NTB	11.4g	11	5.0	3.5	50.0	40.0
	5.0-53-11 NTB	11.6g	11	5.0	3.5	53.0	43.0
	5.0-75-11 NTB	14.9g	11	5.0	3.5	75.0	65.0
	5.0-80-11 NTB	15.5g	11	5.0	3.5	80.0	70.0
	5.0-100-11 NTB	18.3g	11	5.0	3.5	100.0	90.0
	6.0-54-11 NTB	11.9g	11	6.0	3.5	54.0	44.0
	6.0-68-11 NTB	14.0g	11	6.0	3.5	68.0	58.0
	7.0-55-11 NTB	12.1g	11	7.0	3.5	55.0	45.0
	8.0-63.5-11 NTB	28.2g	11	8.0	6.0	63.5	50.5
	8.0-74-11 NTB	32.0g	11	8.0	6.0	74.0	61.0
	8.0-75-11 NTB	32.6g	11	8.0	6.0	75.0	62.0
	8.0-100-11 NTB	42.8g	11	8.0	6.0	100.0	87.0
	8.0-114.5-11 NTB	48.8g	11	8.0	6.0	114.5	101.5
	8.0-150-11 NTB	64.5g	11	8.0	6.0	150.0	130.0
	8.0-200-11 NTB	85.0g	11	8.0	6.0	200.0	180.0
	9.0-64.5-11 NTB	28.4g	11	9.0	6.0	64.5	51.5
	10.0-65.5-11 NTB	28.9g	11	10.0	6.0	65.5	52.5
10.0-118-11 NTB	50.4g	11	10.0	6.0	118.0	105.0	
8.0-63.5-18 NTB	43.0g	18	8.0	6.0	63.5	41.5	
8.0-114.5-18 NTB	63.9g	18	8.0	6.0	114.5	92.5	
9.0-64.5-18 NTB	42.0g	18	9.0	6.0	64.5	42.5	
10.0-65.5-18 NTB	44.0g	18	10.0	6.0	65.5	43.5	



Bestell-Nr. Order No.	Gewicht Weight	D mm	dk mm	d1 mm	L mm	ML mm
5.0-53-11 NTKE	7.3g	11	5.0	3.5	53.0	43.0
6.0-54-11 NTKE	7.4g	11	6.0	3.5	54.0	44.0
7.0-55-11 NTKE	7.7g	11	7.0	3.5	55.0	45.0
8.0-63.5-11 NTKE	12.9g	11	8.0	6.0	63.5	43.5
8.0-114.5-11 NTKE	18.7g	11	8.0	6.0	114.5	94.5
9.0-64.5-11 NTKE	15.7g	11	9.0	6.0	64.5	44.5
10.0-65.5-11 NTKE	15.7g	11	10.0	6.0	65.5	45.5
8.0-63.5-18 NTKE	30.4g	18	8.0	6.0	63.5	41.5
8.0-114.5-18 NTKE	38.0g	18	8.0	6.0	114.5	92.5
9.0-64.5-18 NTKE	32.0g	18	9.0	6.0	64.5	42.5
10.0-65.5-18 NTKE	33.0g	18	10.0	6.0	65.5	43.5

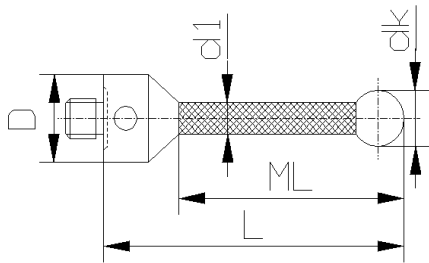
**Taststifte (Typ K) Keramik**  
**Styli (Type K) Ceramic**  
 Kugel: Rubin / Ball: Ruby  
 Schaft: Keramik / Shaft: Ceramic



## Newton Metrology Systems

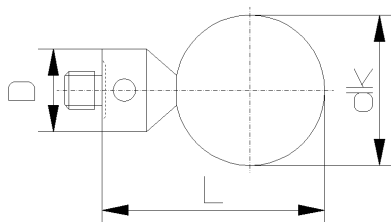
# M5 (Ø 11mm)

Anschluss-Gewinde M5 / M5 thread styli	Bestell-Nr. Order No.	Gewicht Weight	D mm	dk mm	d1 mm	L mm	ML mm
<b>Taststifte (Typ CA) Kohlefaser</b> <b>Styli (Type CA) Carbon Fiber</b> Kugel: Rubin / Ball: Ruby Schaft: CFK / Shaft: Carbon	3.0-25-11 NTCA	5.6g	11	3.0	2.0	25.0	15.0
	3.0-33.5-11 NTCA	5.6g	11	3.0	2.0	33.5	23.5
	3.0-50-11 NTCA	5.7g	11	3.0	2.0	50.0	40.0
	3.0-58-11 NTCA	5.8g	11	3.0	2.0	58.0	48.0
	4.0-33.5-11 NTCA	5.8g	11	4.0	2.0	33.5	23.5
	4.0-64-11 NTCA	5.8g	11	4.0	2.0	64.0	54.0
	5.0-50-11 NTCA	6.5g	11	5.0	4.0	50.0	40.0
	5.0-53-11 NTCA	6.5g	11	5.0	4.0	53.0	43.0
	5.0-75-11 NTCA	6.9g	11	5.0	4.0	75.0	65.0
	5.0-100-11 NTCA	7.4g	11	5.0	4.0	100.0	90.0
	6.0-54-11 NTCA	6.7g	11	6.0	4.0	54.0	44.0
	7.0-55-11 NTCA	7.0g	11	7.0	4.0	55.0	45.0
	8.0-63.5-11 NTCA	8.0g	11	8.0	6.0	63.5	50.5
	8.0-75-11 NTCA	9.7g	11	8.0	6.0	75.0	62.0
	8.0-100-11 NTCA	10.0g	11	8.0	6.0	100.0	87.0
	8.0-114.5-11 NTCA	11.5g	11	8.0	6.0	114.5	101.5
	8.0-150-11 NTCA	12.9g	11	8.0	6.0	150.0	137.0
	8.0-200-11 NTCA	13.0g	11	8.0	6.0	200.0	187.0
	9.0-64.5-11 NTCA	9.7g	11	9.0	6.0	64.5	51.5
	10.0-65.5-11 NTCA	9.7g	11	10.0	6.0	65.5	52.5
	10.0-118-11 NTCA	11.0g	11	10.0	6.0	118.0	105.0
	10.0-150-11 NTCA	12.0g	11	10.0	6.0	150.0	137.0
	10.0-200-11 NTCA	13.0g	11	10.0	6.0	200.0	187.0
	10.0-350-11 NTCA	27.0g	11	10.0	6.0	350.0	325.0
	10.0-500-11 NTCA	34.0g	11	10.0	6.0	500.0	475.0
	8.0-63.5-18 NTCA	27.2g	18	8.0	6.0	63.5	41.5
	8.0-114.5-18 NTCA	29.5g	18	8.0	6.0	114.5	92.5
	9.0-64.5-18 NTCA	29.5g	18	9.0	6.0	64.5	42.5
	10.0-65.5-18 NTCA	29.0g	18	10.0	6.0	65.5	43.5



Bestell-Nr. Order No.	Gewicht Weight	D mm	dk mm	L mm
12.0-28-11 NKE	13.0g	11	12.0	28.0
14.0-28-11 NKE	13.7g	11	14.0	28.0
15.0-28-11 NKE	15.5g	11	15.0	28.0
16.0-28-11 NKE	16.2g	11	16.0	28.0
18.0-28-11 NKE	18.5g	11	18.0	28.0
20.0-33-11 NKE	24.4g	11	20.0	33.0
24.0-37-11 NKE	37.2g	11	24.0	37.0
30.0-43-11 NKE	64.5g	11	30.0	43.0

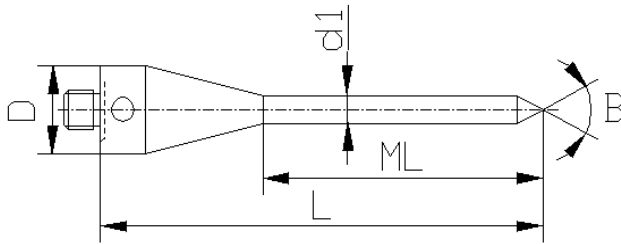
**Keramikkugel-Taster / Ceramic ball styli**  
 Kugel: Keramik / Ball: Ceramic  
 Körper: Stahl / Body: Steel



## Newton Metrology Systems

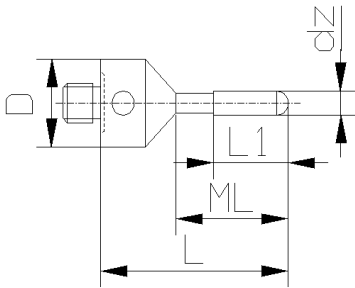
# M5 (Ø 11mm)

Anschluss-Gewinde M5 / M5 thread styli	Bestell-Nr. Order No.	Gewicht Weight	D mm	d1 mm	L mm	ML mm	$\beta$
<b>Tastspitze / Pointed styli</b> Spitze: HM / Point: TC	30-61-11 NTS	15.6g	11	3.5	61.0	39.0	30°



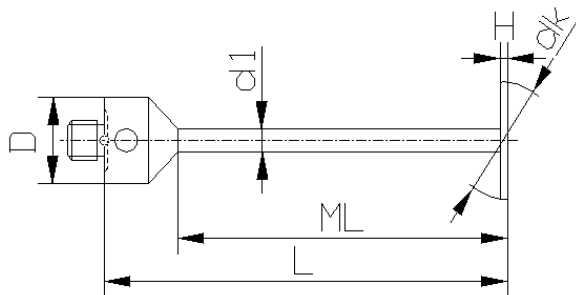
Bestell-Nr. Order No.	Gewicht Weight	D mm	dz mm	L mm	ML mm	L1 mm
--------------------------	-------------------	---------	----------	---------	----------	----------

Zylindertaststifte (Typ A) / Cylinder styli (Type A)	Bestell-Nr. Order No.	Gewicht Weight	D mm	dz mm	L mm	ML mm	L1 mm
Zylinder: Rubin / Cylinder: Ruby	2.0-25-11 NZRA	6.0g	11	2.0	25.0	14.0	5.0
	3.0-25-11 NZRA	6.0g	11	3.0	25.0	14.0	10.0
	4.0-30-11 NZRA	7.0g	11	4.0	30.0	21.0	10.0



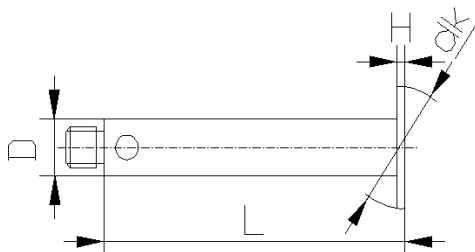
Bestell-Nr. Order No.	Gewicht Weight	D mm	dk mm	d1 mm	L mm	ML mm	H mm
--------------------------	-------------------	---------	----------	----------	---------	----------	---------

Kugelscheiben-Taststifte / Ball disc styli	Bestell-Nr. Order No.	Gewicht Weight	D mm	dk mm	d1 mm	L mm	ML mm	H mm
Scheibe: Keramik / Disc: Ceramic	5.0-45-11 NKSK	7.0g	11	5.0	2.0	45.0	35.0	0.5
Schaft: HM / Shaft: TC	10.0-55-11 NKSK	11.0g	11	10.0	3.0	55.0	45.0	0.8
	14.0-55-11 NKSK	11.0g	11	14.0	3.0	55.0	45.0	1.0



Bestell-Nr. Order No.	Gewicht Weight	D mm	dk mm	L mm	H mm
--------------------------	-------------------	---------	----------	---------	---------

Kugelscheiben-Taststifte / Ball disc styli	Bestell-Nr. Order No.	Gewicht Weight	D mm	dk mm	L mm	H mm
Scheibe: Keramik / Disc: Ceramic	15-40 NKSK	5.0g	7	15.0	40.0	1.0
Schaft: Alu 7075 / Shaft: Alu 7075	20-60 NKSK	8.0g	7	20.0	60.0	1.0

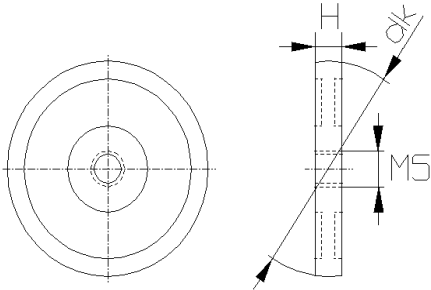


**Newton Metrology Systems**

Mob : +91 73488 98009 / 73488 93121 mailto: info@newtonmetrology.in http:// www.newtonmetrology.in  
Dimensional measurement technology : Styli for coordinate measuring machines (CMM), machine tools, height gauges

# M5 (Ø 11mm)

Anschluss-Gewinde M5 / M5 thread styli	Bestell-Nr. Order No.	Gewicht Weight	dk mm	H mm
Tastscheibe mit Gewinde M5 / Disc styli with M5 thread Scheibe: Stahl gehärtet / Disc: Steel hardened	10-4 NTSG	2.0g	10.0	4.0
	15-4 NTSG	5.0g	15.0	4.0
	20-4 NTSG	10.0g	20.0	4.0
	30-4 NTSG	22.0g	30.0	4.0
	40-4 NTSG	34.0g	40.0	4.0
	50-5 NTSG	67.0g	50.0	5.0
60-6 NTSG	115.0g	60.0	6.0	

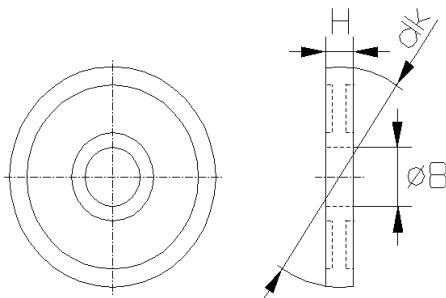


Mit Taststifte mit langem Gewinde (Seite 60) oder Linsenschraube (Seite 74) zu verwenden.

For use with Styli with extended thread (Page 60), or Oval head screw (Page 74).

Bestell-Nr. Order No.	Gewicht Weight	dk mm	H mm
15-4 NTSA	4.0g	15.0	4.0
20-2 NTSA	4.5g	20.0	2.0
20-4 NTSA	8.5g	20.0	4.0
30-4 NTSA	21.0g	30.0	4.0
40-4 NTSA	33.0g	40.0	4.0
50-5 NTSA	65.5g	50.0	5.0
60-6 NTSA	113.5g	60.0	6.0

Tastscheibe mit Aufnahme Ø 8mm / Disc styli with hole Ø 8mm  
Scheibe: Stahl gehärtet / Disc: Steel hardened

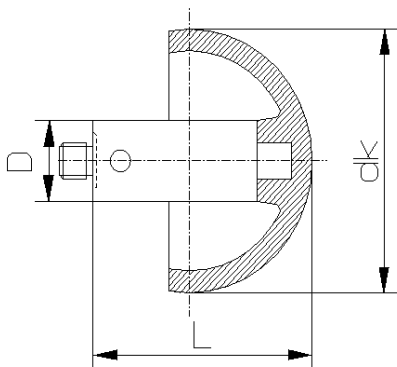


Mit Schraube für Tastscheibe (Seite 74) zu verwenden.

For use with Screw for disc styli (Page 74).

Bestell-Nr. Order No.	Gewicht Weight	D mm	dk mm	L mm
18.0-16-11 NHKE	8.6g	11	18.0	22.0
24.0-19-11 NHKE	13.2g	11	24.0	27.0
30.0-22-11 NHKE	17.5g	11	30.0	29.0

Hohle Keramik-Kugel-Taster / Hollow ceramic ball styli  
Kugel: Keramik / Ball: Ceramic  
Schaft: Alu 7075 / Shaft: Alu 7075



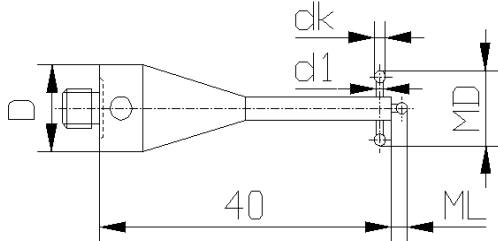
**Newton Metrology Systems**

Mob : +91 73488 98009 / 73488 93121 mailto: info@newtonmetrology.in http:// www.newtonmetrology.in  
Dimensional measurement technology : Styli for coordinate measuring machines (CMM), machine tools, height gauges



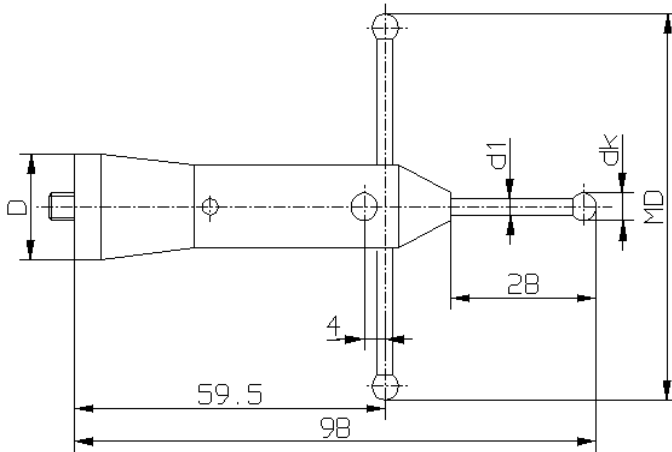
# M5 (Ø 11mm)

Anschluss-Gewinde M5 / M5 thread styli	Bestell-Nr. Order No.	Gewicht Weight	D mm	dk mm	d1 mm	MD mm	ML mm
<b>Taster für Gewindemessung</b> <i>Styli for thread measuring</i> Kugel: Rubin / Ball: Ruby Schaft: HM / Shaft: TC	0.5-40-11 NSTG	7.0g	11	0.5	0.4	3.5	1.9
	0.8-40-11 NSTG	7.0g	11	0.8	0.6	5.0	1.9
	1.35-40-11 NSTG	12.0g	11	1.35	1.0	9.0	2.0
	1.8-40-11 NSTG	12.0g	11	1.8	1.5	10.0	2.0
	2.3-40-11 NSTG	13.0g	11	2.3	1.8	12.0	2.5



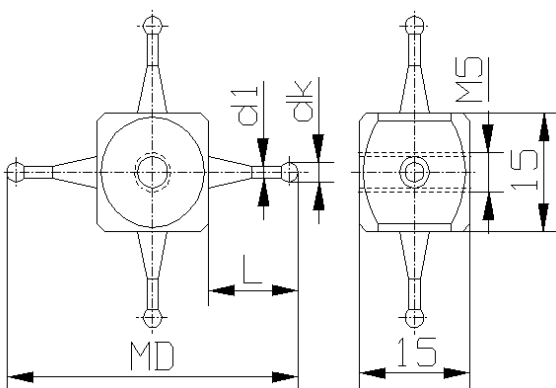
Bestell-Nr. Order No.	Gewicht Weight	D mm	dk mm	d1 mm	MD mm
--------------------------	-------------------	---------	----------	----------	----------

Sterntaster / Star styli	Bestell-Nr. Order No.	Gewicht Weight	D mm	dk mm	d1 mm	MD mm
Kugel: Rubin / Ball: Ruby Schaft: HM / Shaft: TC Körper: Alu 7075 / Body: Alu 7075	5.0-80-19 NST	65.0g	19	5.0	3.5	80.0



Bestell-Nr. Order No.	Gewicht Weight	dk mm	d1 mm	MD mm	L mm
--------------------------	-------------------	----------	----------	----------	---------

Würfelstern / Cube stars	Bestell-Nr. Order No.	Gewicht Weight	dk mm	d1 mm	MD mm	L mm
Kugel: Rubin / Ball: Ruby Würfel: Alu 7075 / Cube: Alu 7075	1.0-45 NWST	10.4g	1.0	0.7	45.0	15.0
	1.5-45 NWST	10.4g	1.5	1.1	45.0	15.0
	2.0-45 NWST	11.0g	2.0	1.5	45.0	15.0
	2.5-45 NWST	11.0g	2.5	1.8	45.0	15.0
	3.5-45 NWST	11.5g	3.5	2.2	45.0	15.0



Die Taststifte mit Gewinde M3 können bei Bruch oder Beschädigung ausgewechselt werden.

*M3 thread styli can be replaced in case of damage.*

**Ersatz-Taststifte M3 / Replacement M3 thread styli:**

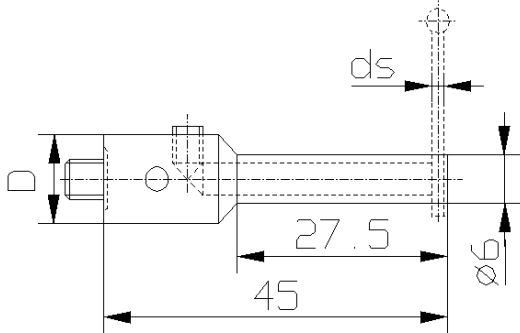
1.0-15-3 NTC	0.6g	1.0	0.7		15.0
1.5-15-3 NTC	0.6g	1.5	1.1		15.0
2.0-15-3 NTC	0.7g	2.0	1.5		15.0
2.5-15-3 NTC	0.7g	2.5	1.8		15.0
3.5-15-3 NTC	0.9g	3.5	2.2		15.0

**Newton Metrology Systems**

Mob : +91 73488 98009 / 73488 93121 mailto: info@newtonmetrology.in http:// www.newtonmetrology.in  
 Dimensional measurement technology : Styli for coordinate measuring machines (CMM), machine tools, height gauges

# M5 (Ø 11mm)

<b>Anschluss-Gewinde M5 / M5 thread</b>	<b>Bestell-Nr. / Order No.</b>	<b>Gewicht / Weight</b>	<b>D</b> mm	<b>ds</b> mm
<b>Taststift-Halter / Holders for styli</b>	1.0-45-11 NHT	16.4g	11	1-1.5

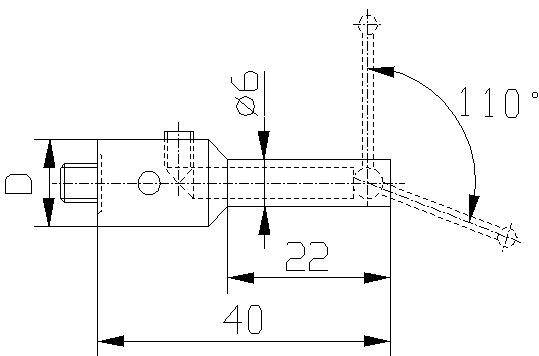


Zur Aufnahme der **Taststifte (Typ F), (Typ N)** mit  $ds = 1-1.5\text{mm}$  (Seite 8).

For use with **Styli (Type F), (Type N)** with  $ds = 1-1.5\text{mm}$  (Page 8).

<b>Bestell-Nr. / Order No.</b>	<b>Gewicht / Weight</b>	<b>D</b> mm
1.0-40-11 NHTS	15.0g	11

<b>Taststift-Halter schwenkbar / Holders for styli swiveling</b>	<b>Bestell-Nr. / Order No.</b>	<b>Gewicht / Weight</b>	<b>D</b> mm
	1.0-40-11 NHTS	15.0g	11



Nur mit **Taststifte (Typ S)** zu verwenden.

Use only with **Styli (Type S)**.

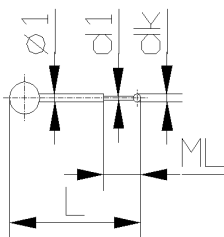
<b>Bestell-Nr. / Order No.</b>	<b>Gewicht / Weight</b>	<b>dk</b> mm	<b>d1</b> mm	<b>L</b> mm	<b>ML</b> mm
1.0-17.5 NTES	0.6g	1.0	0.8	17.5	5.0

<b>Taststifte (Typ S) / Styli (Type S)</b>	<b>Bestell-Nr. / Order No.</b>	<b>Gewicht / Weight</b>	<b>dk</b> mm	<b>d1</b> mm	<b>L</b> mm	<b>ML</b> mm
	1.0-17.5 NTES	0.6g	1.0	0.8	17.5	5.0

Kugel: Rubin / Ball: Ruby  
Schaft: HM / Shaft: TC

Nur mit **Taststift-Halter schwenkbar** zu verwenden.

Use only with **Holders for styli swiveling**.



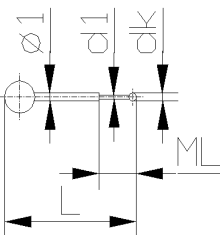
<b>Bestell-Nr. / Order No.</b>	<b>Gewicht / Weight</b>	<b>dk</b> mm	<b>d1</b> mm	<b>L</b> mm
2.0-28.5 NTES	0.9g	2.0	1.5	28.5

<b>Taststifte (Typ S) / Styli (Type S)</b>	<b>Bestell-Nr. / Order No.</b>	<b>Gewicht / Weight</b>	<b>dk</b> mm	<b>d1</b> mm	<b>L</b> mm
	2.0-28.5 NTES	0.9g	2.0	1.5	28.5

Kugel: Rubin / Ball: Ruby  
Schaft: HM / Shaft: TC

Nur mit **Taststift-Halter schwenkbar** zu verwenden.

Use only with **Holders for styli swiveling**.

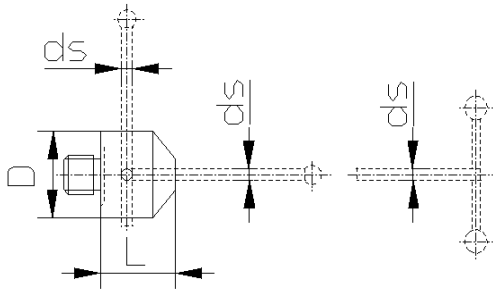


**Newton Metrology Systems**

Mob : +91 73488 98009 / 73488 93121 mailto: info@newtonmetrology.in http:// www.newtonmetrology.in  
Dimensional measurement technology : Styli for coordinate measuring machines (CMM), machine tools, height gauges

# M5 (Ø 11mm)

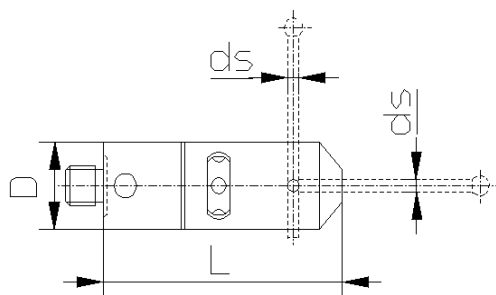
Anschluss-Gewinde M5 / M5 thread	Bestell-Nr. Order No.	Gewicht Weight	D mm	ds mm	L mm
<b>Taststift-Halter (für max. 5 Taststifte)</b> <i>Holder for styli (for max. 5 styli)</i>	1.0-10-11 NHT	5.8g	11	1.0	10.0
	1.5-10-11 NHT	5.6g	11	1.5	10.0
	2.0-10-11 NHT	5.4g	11	2.0	10.0



Zur Aufnahme der **Taststifte (Typ FM), (Typ F), (Typ N)** und **T-Taster (Typ H)**  
(Seite 6+8+9).

*For use with Styli (Type FM), (Type F), (Type N) and T-Styli (Type H) (Page 6+8+9).*

Bestell-Nr. Order No.	Gewicht Weight	D mm	ds mm	L mm	
<b>Taststift-Halter drehbar (für max. 5 Taststifte)</b> <i>Holder for styli rotary (for max. 5 styli)</i>	1.0-32-11 NHTD	15.5g	11	1.0	32.0
	1.5-32-11 NHTD	15.5g	11	1.5	32.0
	2.0-32-11 NHTD	15.5g	11	2.0	32.0



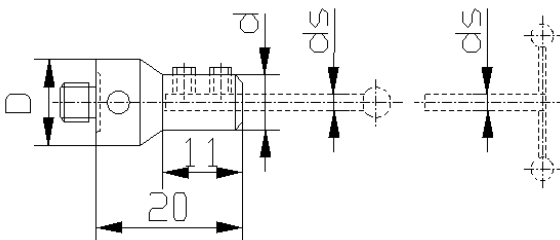
Zur Aufnahme der **Taststifte (Typ FM), (Typ F), (Typ N)** und **T-Taster (Typ H)**  
(Seite 6+8+9).

Mit Hilfe des integrierten Drehstücks können die angebaute Tastelemente ausgerichtet werden.

*For use with Styli (Type FM), (Type F), (Type N) and T-Styli (Type H) (Page 6+8+9).*

*A built-in rotating adaptor allows styli positioning.*

Bestell-Nr. Order No.	Gewicht Weight	D mm	ds mm	d mm	
<b>Taststift-Halter / Holder for styli</b>	1.0-20-11 NHT	9.0g	11	1.0	6.0
	1.5-20-11 NHT	9.0g	11	1.5	7.0
	2.0-20-11 NHT	9.0g	11	2.0	7.0
	3.0-20-11 NHT	10.0g	11	3.0	8.0



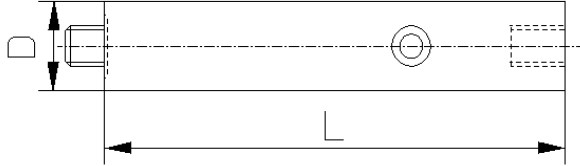
Zur Aufnahme der **Taststifte (Typ FM), (Typ F), (Typ N)** und **T-Taster (Typ H)**  
(Seite 6+8+9).

*For use with Styli (Type FM), (Type F), (Type N) and T-Styli (Type H) (Page 6+8+9).*

## Newton Metrology Systems

# M5 (Ø 11mm)

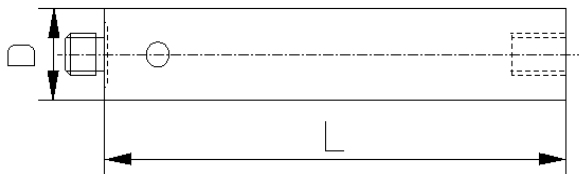
<b>Anschluss-Gewinde M5 / M5 thread</b>	<b>Bestell-Nr. Order No.</b>	<b>Gewicht Weight</b>	<b>D mm</b>	<b>L mm</b>
<b>Verlängerungen Aluminium / Extensions Aluminium</b> Voll-Material (Gewinde aus Stahl) / Solid material (Steel thread)	25-11 NVAL	6.9g	11	25.0
	40-11 NVAL	10.5g	11	40.0
	50-11 NVAL	12.8g	11	50.0
	60-11 NVAL	15.6g	11	60.0
	80-11 NVAL	20.4g	11	80.0
	100-11 NVAL	25.7g	11	100.0
	120-11 NVAL	30.8g	11	120.0



<b>Bestell-Nr. Order No.</b>	<b>Gewicht Weight</b>	<b>D mm</b>	<b>L mm</b>
10-11 NVST	6.4g	11	10.0
15-11 NVST	9.8g	11	15.0
20-11 NVST	13.2g	11	20.0
25-11 NVST	17.0g	11	25.0
40-11 NVST	28.2g	11	40.0
60-11 NVST	42.8g	11	60.0
80-11 NVST	57.7g	11	80.0
100-11 NVST	72.4g	11	100.0

## **Verlängerungen Stahl / Extensions Steel**

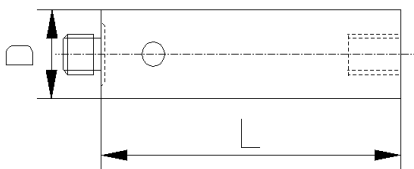
Voll-Material / Solid material



<b>Bestell-Nr. Order No.</b>	<b>Gewicht Weight</b>	<b>D mm</b>	<b>L mm</b>
10-11 NVPE	2.3g	11	10.0
15-11 NVPE	3.5g	11	15.0
20-11 NVPE	4.8g	11	20.0
25-11 NVPE	6.0g	11	25.0
40-11 NVPE	10.0g	11	40.0
50-11 NVPE	12.6g	11	50.0
15-18 NVPE	10.0g	18	15.0
25-18 NVPE	17.0g	18	25.0
40-18 NVPE	27.7g	18	40.0
50-18 NVPE	34.8g	18	50.0

## **Verlängerungen Alu 7075 / Extensions Alu 7075**

Voll-Material / Solid material

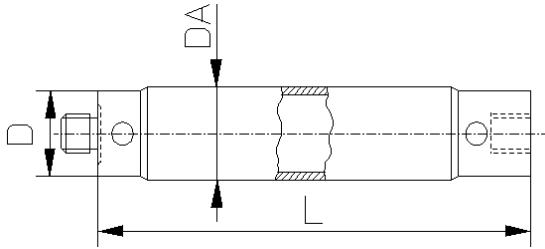


**Newton Metrology Systems**

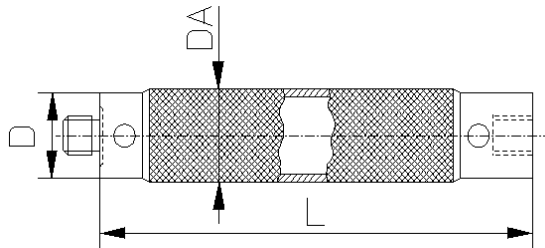
Mob : +91 73488 98009 / 73488 93121 mailto: info@newtonmetrology.in [http:// www.newtonmetrology.in](http://www.newtonmetrology.in)  
Dimensional measurement technology : Styli for coordinate measuring machines (CMM), machine tools, height gauges

# M5 (Ø 11mm)

Anschluss-Gewinde M5 / M5 thread	Bestell-Nr. Order No.	Gewicht Weight	D mm	DA mm	L mm
Verlängerungen Alu 7075 / Extensions Alu 7075 Rohr-Material / Tube material	60-11 NVPE	10.7g	11	12.0	60.0
	75-11 NVPE	12.1g	11	12.0	75.0
	80-11 NVPE	12.0g	11	12.0	80.0
	90-11 NVPE	13.6g	11	12.0	90.0
	100-11 NVPE	14.4g	11	12.0	100.0
	120-11 NVPE	16.1g	11	12.0	120.0
	150-11 NVPE	19.0g	11	12.0	150.0
	200-11 NVPE	22.5g	11	12.0	200.0
	60-18 NVPE	28.5g	18	20.0	60.0
	75-18 NVPE	34.9g	18	20.0	75.0
	80-18 NVPE	34.4g	18	20.0	80.0
	90-18 NVPE	37.4g	18	20.0	90.0
	100-18 NVPE	39.7g	18	20.0	100.0
	120-18 NVPE	44.9g	18	20.0	120.0
	150-18 NVPE	53.5g	18	20.0	150.0
	200-18 NVPE	66.5g	18	20.0	200.0
	250-18 NVPE	81.6g	18	20.0	250.0
	300-18 NVPE	93.0g	18	20.0	300.0



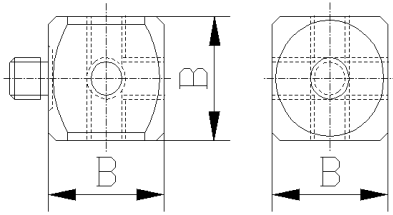
Bestell-Nr. Order No.	Gewicht Weight	D mm	DA mm	L mm	
Verlängerungen Kohlefaser (CFK) Extensions Carbon Fiber Rohr-Material / Tube material	40-11 NVCA	6.9g	11	12.0	40.0
	50-11 NVCA	8.2g	11	12.0	50.0
	60-11 NVCA	8.8g	11	12.0	60.0
	75-11 NVCA	9.6g	11	12.0	75.0
	80-11 NVCA	10.0g	11	12.0	80.0
	90-11 NVCA	10.3g	11	12.0	90.0
	100-11 NVCA	11.2g	11	12.0	100.0
	120-11 NVCA	12.0g	11	12.0	120.0
	150-11 NVCA	14.4g	11	12.0	150.0
	160-11 NVCA	14.0g	11	12.0	160.0
	200-11 NVCA	16.2g	11	12.0	200.0
	210-11 NVCA	16.6g	11	12.0	210.0
	250-11 NVCA	19.0g	11	12.0	250.0
	300-11 NVCA	21.2g	11	12.0	300.0
	400-11 NVCA	28.0g	11	12.0	400.0
	50-18 NVCA	21.6g	18	20.0	50.0
	60-18 NVCA	25.4g	18	20.0	60.0
	80-18 NVCA	27.8g	18	20.0	80.0
	100-18 NVCA	30.0g	18	20.0	100.0
	120-18 NVCA	32.3g	18	20.0	120.0
	150-18 NVCA	36.8g	18	20.0	150.0
	200-18 NVCA	43.0g	18	20.0	200.0
	250-18 NVCA	48.8g	18	20.0	250.0
	300-18 NVCA	55.2g	18	20.0	300.0
	400-18 NVCA	68.8g	18	20.0	400.0
	500-18 NVCA	80.4g	18	20.0	500.0
	600-18 NVCA	94.7g	18	20.0	600.0



## Newton Metrology Systems

# M5 (Ø 11mm)

Anschluss-Gewinde M5 / M5 thread	Bestell-Nr. Order No.	Gewicht Weight	B mm
Würfel M5 / Cubes M5 Material: Alu 7075 / Material: Alu 7075	15-15 NWA	8.2g	15
	20-20 NWA	20.3g	20

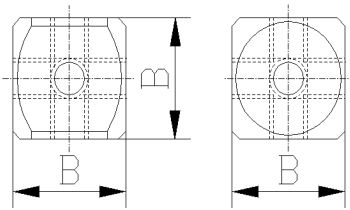


Zur Aufnahme von **Komponenten mit Gewinde M5**.  
Mit **Schraube für Würfel** zu verwenden (Seite 74).

*For use with M5 thread components.*  
*For use with Screw for cube (Page 74).*

Bestell-Nr. Order No.	Gewicht Weight	B mm
15-15 NWB	7.2g	15
20-20 NWB	19.1g	20

Würfel M5 / Cubes M5 Material: Alu 7075 / Material: Alu 7075	Bestell-Nr. Order No.	Gewicht Weight	B mm
	15-15 NWA	8.2g	15
	20-20 NWA	20.3g	20

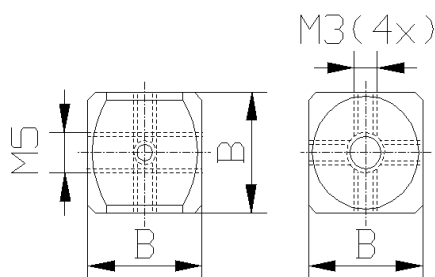


Zur Aufnahme von **Komponenten mit Gewinde M5**.  
Mit **Schraube für Würfel** zu verwenden (Seite 74).

*For use with M5 thread components.*  
*For use with Screw for cube (Page 74).*

Bestell-Nr. Order No.	Gewicht Weight	B mm
15-15 NWST	7.9g	15
20-20 NWST	20.3g	20

Würfel M5 - M3 / Cubes M5 - M3 Material: Alu 7075 / Material: Alu 7075	Bestell-Nr. Order No.	Gewicht Weight	B mm
	15-15 NWST	7.9g	15
	20-20 NWST	20.3g	20



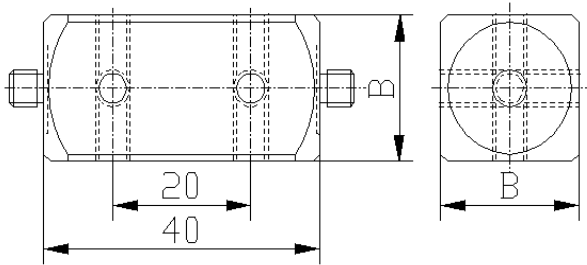
Zur Aufnahme von **Komponenten mit Gewinde M3**.  
Mit **Schraube für Würfel** zu verwenden (Seite 74).

*For use with M3 thread components.*  
*For use with Screw for cube (Page 74).*

## Newton Metrology Systems

# M5 (Ø 11mm)

<b>Anschluss-Gewinde M5 / M5 thread</b>	<b>Bestell-Nr. / Order No.</b>	<b>Gewicht / Weight</b>	<b>B mm</b>
<b>Doppelwürfel M5 / Double cubes M5</b> Material: Alu 7075 / Material: Alu 7075	20-20 NDW	40.8g	<b>20</b>

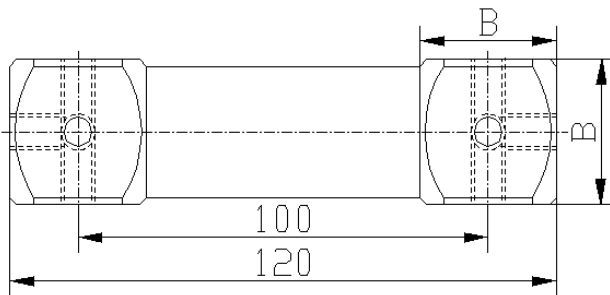


Zur Aufnahme von **Komponenten mit Gewinde M5**.  
Mit **Schraube für Würfel** zu verwenden (Seite 74).

*For use with M5 thread components.*  
*For use with Screw for cube (Page 74).*

<b>Bestell-Nr. / Order No.</b>	<b>Gewicht / Weight</b>	<b>B mm</b>
20-20 NWV	62.4g	<b>20</b>

<b>Würfelerlängerung M5 / Cube extensions M5</b> Material: Alu 7075 / Material: Alu 7075	<b>Bestell-Nr. / Order No.</b>	<b>Gewicht / Weight</b>	<b>B mm</b>
	20-20 NWV	62.4g	<b>20</b>



Zur Aufnahme von **Komponenten mit Gewinde M5**.  
Mit **Schraube für Würfel** zu verwenden (Seite 74).

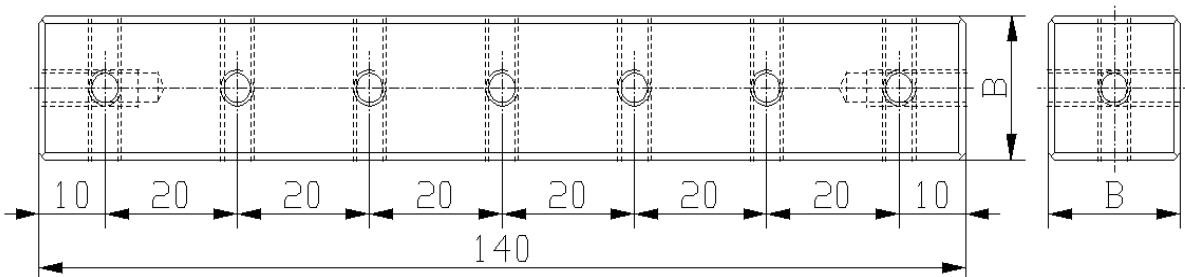
*For use with M5 thread components.*  
*For use with Screw for cube (Page 74).*

<b>Bestell-Nr. / Order No.</b>	<b>Gewicht / Weight</b>	<b>B mm</b>
20-20 NMW	144.0g	<b>20</b>

<b>Mehrfachwürfel M5 / Multi cubes M5</b> Material: Alu 7075 / Material: Alu 7075	<b>Bestell-Nr. / Order No.</b>	<b>Gewicht / Weight</b>	<b>B mm</b>
	20-20 NMW	144.0g	<b>20</b>

Zur Aufnahme von **Komponenten mit Gewinde M5**.  
Mit **Schraube für Würfel** zu verwenden (Seite 74).

*For use with M5 thread components.*  
*For use with Screw for cube (Page 74).*

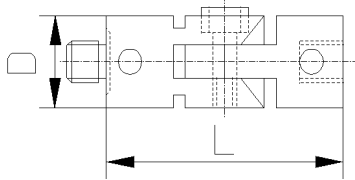


**Newton Metrology Systems**

Mob : +91 73488 98009 / 73488 93121 mailto: info@newtonmetrology.in [http:// www.newtonmetrology.in](http://www.newtonmetrology.in)  
Dimensional measurement technology : Styli for coordinate measuring machines (CMM), machine tools, height gauges

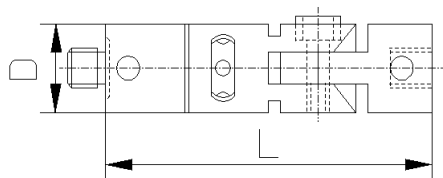
# M5 (Ø 11mm)

Anschluss-Gewinde M5 / M5 thread	Bestell-Nr. Order No.	Gewicht Weight	D mm	L mm
<b>Gelenk / Knuckle joints</b> Material: Alu 7075 / Material: Alu 7075	30-11 NGA	7.0g	<b>11</b>	30.0
	36-18 NGA	24.0g	<b>18</b>	36.0



Bestell-Nr. Order No.	Gewicht Weight	D mm	L mm
43-11 NGD	13.0g	<b>11</b>	43.0
55-18 NGD	38.0g	<b>18</b>	55.0

**Gelenk drehbar / Knuckle joints rotary**  
Material: Alu 7075 / Material: Alu 7075

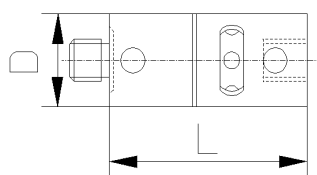


Mit Hilfe des integrierten Drehstücks können die angebauten Tastelemente ausgerichtet werden.

*A built-in rotating adaptor allows styli positioning.*

Bestell-Nr. Order No.	Gewicht Weight	D mm	L mm
25-11 NDSP	9.0g	<b>11</b>	25.0
25-18 NDSP	21.0g	<b>18</b>	25.0

**Drehstück / Rotating adaptors**  
Material: Alu 7075 / Material: Alu 7075



Mit Hilfe des Drehstücks können die angebauten Tastelemente ausgerichtet werden.

*Rotating adaptor allows styli positioning.*

**Newton Metrology Systems**

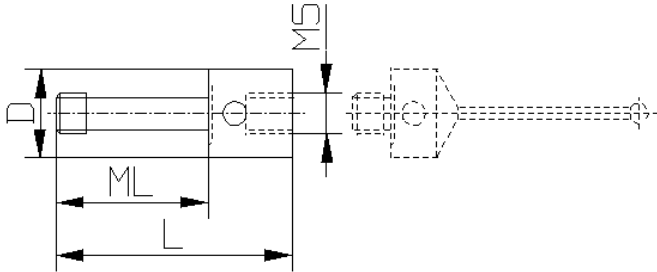
Mob : +91 73488 98009 / 73488 93121 mailto: info@newtonmetrology.in [http:// www.newtonmetrology.in](http://www.newtonmetrology.in)  
Dimensional measurement technology : Styli for coordinate measuring machines (CMM), machine tools, height gauges



# M5 (Ø 11mm)

Anschluss-Gewinde M5 / M5 thread	Bestell-Nr. Order No.	Gewicht Weight	D mm	L mm	ML mm
----------------------------------	--------------------------	-------------------	---------	---------	----------

Schraube für Würfel / Screws for cube Material: Alu 7075 / Material: Alu 7075	5-20 NSWA	3.0g	11	31.0	20.0
	5-25 NSWA	3.3g	11	36.0	25.0



Zur Aufnahme der **Würfel M5** (Seite 71+72) und **Taststifte mit Gewinde M5**.

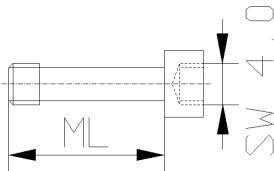
Länge **ML=20mm** passt zu Würfel M5 mit **B=15mm**  
Länge **ML=25mm** passt zu Würfel M5 mit **B=20mm**

For use with **Cubes M5** (Page 71+72) and **M5 thread styli**.

**ML=20mm** fits to **Cube M5** with **B=15mm**  
**ML=25mm** fits to **Cube M5** with **B=20mm**

Bestell-Nr. Order No.	Gewicht Weight	ML mm
--------------------------	-------------------	----------

Schraube für Würfel / Screws for cube Material: Stahl / Material: Steel	5-20 NSWB	3.3g	20.0
	5-25 NSWB	3.8g	25.0



Zur Aufnahme der **Würfel M5** (Seite 71+72).

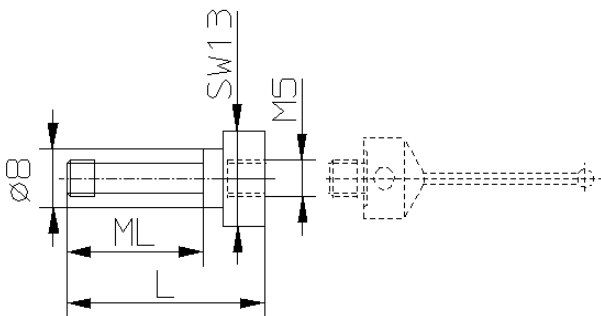
Länge **ML=20mm** passt zu Würfel M5 mit **B=15mm**  
Länge **ML=25mm** passt zu Würfel M5 mit **B=20mm**

For use with **Cubes M5** (Page 71+72).

**ML=20mm** fits to **Cube M5** with **B=15mm**  
**ML=25mm** fits to **Cube M5** with **B=20mm**

Bestell-Nr. Order No.	Gewicht Weight	L mm	ML mm
--------------------------	-------------------	---------	----------

Schraube für Tastscheibe / Screws for disc styli Material: Stahl / Material: Steel	5-15.5 NST	7.3g	15.5	8.0
	5-30 NST	8.7g	30.0	21.0
	5-35 NST	9.1g	35.0	26.0



Zur Aufnahme der **Tastscheibe mit Aufnahme Ø 8mm** (Seite 65) zusammen mit **Würfel M5** (Seite 71+72).

Länge **ML=8mm** zum direkten Einschrauben  
(z.B. an Verlängerung)

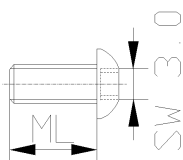
Länge **ML=21mm** passt zu Würfel M5 mit **B=15mm**  
Länge **ML=26mm** passt zu Würfel M5 mit **B=20mm**

For use with **Disc styli with hole Ø 8mm**  
(Page 65) together with **Cube M5** (Page 71+72).

**ML=8mm** fits to **Extension M5**  
**ML=21mm** fits to **Cube M5** with **B=15mm**  
**ML=26mm** fits to **Cube M5** with **B=20mm**

Bestell-Nr. Order No.	Gewicht Weight	ML mm
--------------------------	-------------------	----------

Linsenschraube / Oval head screws Material: Stahl / Material: Steel	5-10 NSL	2.3g	10.0
	5-12 NSL	2.6g	12.0



Zur Aufnahme der **Tastscheibe mit Gewinde M5** (Seite 65).

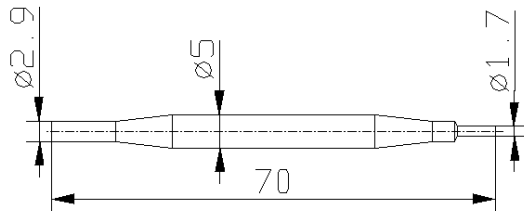
For use with **Disc styli with M5 thread** (Page 65).

## Newton Metrology Systems

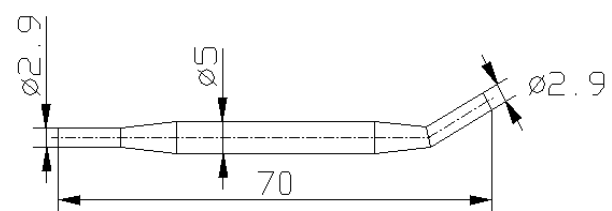
# M5 (Ø 11mm)

Werkzeuge für Komponenten mit Anschluss-Gewinde M5 / Tools for M5 thread components	Bestell-Nr. Order No.	Bezeichnung Description
Stiftschlüssel / Pin key	1.7 NWST	Ø 1.7mm für Drehstück D=11mm Ø 1.7mm for rotating holders D=11mm
	2.9 NWST	Ø 2.9mm für Komponenten mit M5 Ø 2.9mm for M5 thread components
	1.7-2.9 NWST	Stiftschlüssel-Set Ø 1.7 / 2.9mm Pin key set Ø 1.7 / 2.9mm

1.7 NWST



2.9 NWST



## Sechskantschlüssel / Hexagon key



Bestell-Nr. Order No.	Bezeichnung Description
0.9 NWSK	SW 0.9mm für Inbus-Schrauben M2 0.9mm for hexagon socket screw M2
1.5 NWSK	SW 1.5mm für Inbus-Schrauben M3 1.5mm for hexagon socket screw M3
2.0 NWSK	SW 2.0mm für Inbus-Schrauben M4 2.0mm for hexagon socket screw M4
2.5 NWSK	SW 2.5mm für Zylinder-Schrauben M3 2.5mm for cylinder screw M3
3.0 NWSK	SW 3.0mm für Linsenschrauben M5 3.0mm for oval head screw M5
4.0 NWSK	SW 4.0mm für Zylinder-Schrauben M5 4.0mm for cylinder screw M5

Bestell-Nr. Order No.	Inhalt Contents
--------------------------	--------------------

Schraubensortiment (Ersatzschrauben) Screws assortment (Replacement screws)	12-11 NSS	12 Teile / 12 parts
--	-----------	---------------------

Schraubensortiment bestehend aus:	
1 Stk.	Zylinderschrauben M3x8
1 Stk.	Zylinderschrauben M5x12
4 Stk.	Gewindestifte M2x4
3 Stk.	Gewindestifte M3x3
1 Stk.	Gewindestifte M4x5
2 Stk.	Gewindestifte M5x6

Screws assortment:	
1 pc	Cylinder screw M3x8
1 pc	Cylinder screw M5x12
4 pcs	Set screw M2x4
3 pcs	Set screw M3x3
1 pc	Set screw M4x5
2 pcs	Set screw M5x6

## Newton Metrology Systems

# M5 (Ø 11mm)

Anschluss-Gewinde M5 / M5 thread styli sets	Bestell-Nr. Order No.	Inhalt Contents
Taststifte Set / Styli sets	30-11 NTBST	30 Teile / 30 parts

Tastelemente und diverses Zubehör sind in Taststifte Sets zusammengestellt.

Dieses Set ist mit den gebräuchlichsten Taststiften bestückt, um einfachere Messungen erfolgreich zu bewältigen. Durch die freien Steckplätze haben Sie die Möglichkeit, Ihren Bausatz jederzeit mit benötigten Komponenten zu erweitern, um auch anspruchsvollere Messaufgaben lösen zu können.

Im grosszügig dimensionierten Schaumstoffetui sind Ihre Tastelemente sicher vor Staub und Beschädigung geschützt.

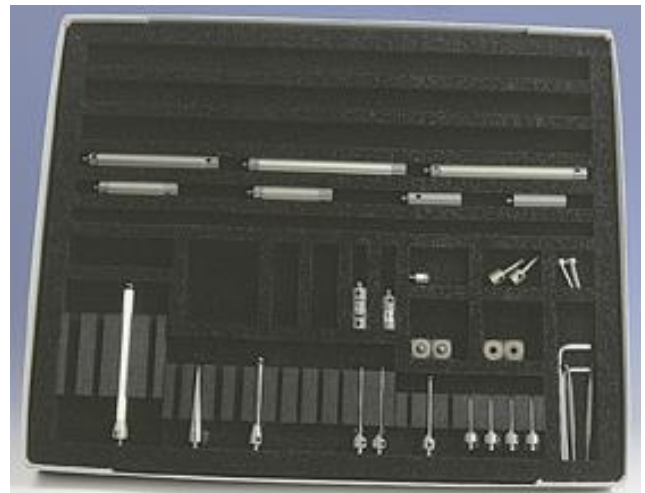
*Styli and accessories are available in styli sets.*

*This standard set is stocked with the most common styli and accessories needed to perform simple measurements successfully.*

*The empty spaces offer the possibility of enlarging your set at any time with the components needed for even the most specialized measurement needs.*

*Your styli set is protected from dust or damage in a generously sized foam case with a cover.*

Im Set enthaltene Komponenten: <i>Supplied equipment:</i>	Skizze: <i>Drawing:</i>
4 Stk. / pcs 3.0-33.5-11 NTB	Seite / Page 62
2 Stk. / pcs 3.0-58-11 NTB	Seite / Page 62
1 Stk. / pc 5.0-53-11 NTB	Seite / Page 62
1 Stk. / pc 8.0-63.5-11 NTB	Seite / Page 62
1 Stk. / pc 8.0-114.5-11 NTKE	Seite / Page 62
1 Stk. / pc 2.0-55-11 NTF	Seite / Page 61
1 Stk. / pc 1.5-26.5-1 NTN	Seite / Page 8
1 Stk. / pc 1.0-10-11 NHT	Seite / Page 68
1 Stk. / pc 25-11 NDSP	Seite / Page 73
2 Stk. / pcs 15-15 NWA	Seite / Page 71
2 Stk. / pcs 15-15 NWB	Seite / Page 71
1 Stk. / pc 30-11 NGA	Seite / Page 73
2 Stk. / pcs 5-20 NSWA	Seite / Page 74
2 Stk. / pcs 5-20 NSWB	Seite / Page 74
2 Stk. / pcs 40-11 NVPE	Seite / Page 69
2 Stk. / pcs 60-11 NVPE	Seite / Page 70
1 Stk. / pc 100-11 NVPE	Seite / Page 70
2 Stk. / pcs 120-11 NVPE	Seite / Page 70
1 Stk. / pc 1.7-2.9 NWST	Seite / Page 75



	Bestell-Nr. Order No.	Bezeichnung Description
Leere Schaumstoffetuis / Empty foam cases	11-18 NSEST	Schaumstoffetui mit Steckplätzen für alle gebräuchlichen Komponenten <i>Foam case with a cover for the most commonly used styli and accessories</i>

## Newton Metrology Systems

Mob : +91 73488 98009 / 73488 93121 mailto: info@newtonmetrology.in http:// www.newtonmetrology.in  
Dimensional measurement technology : Styli for coordinate measuring machines (CMM), machine tools, height gauges

# M5 (Ø 12mm)

**Tastelemente / *Styli*** 78-79

---

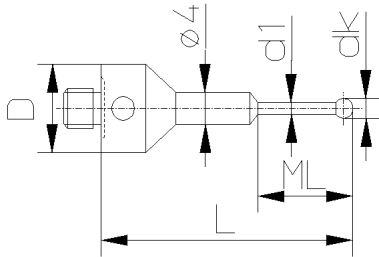
**Werkzeuge / *Tools*** 79

---

# M5 (Ø 12mm)

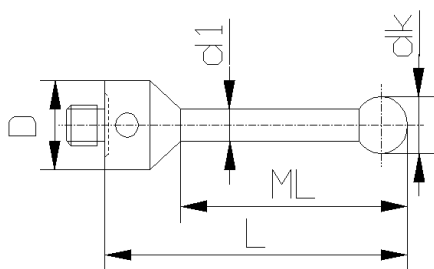
Anschluss-Gewinde M5 / M5 thread styli	Bestell-Nr. Order No.	Gewicht Weight	D mm	dk mm	d1 mm	L mm	ML mm
--	--------------------------	-------------------	---------	----------	----------	---------	----------

Taststifte (Typ BA) / Styli (Type BA) Kugel: Rubin / Ball: Ruby Schaft: HM / Shaft: TC	2.0-41-12 NTBA	7.3g	12	2.0	1.5	41.0	16.0
	2.0-67-12 NTBA	11.5g	12	2.0	1.5	67.0	16.0



Bestell-Nr. Order No.	Gewicht Weight	D mm	dk mm	d1 mm	L mm	ML mm
--------------------------	-------------------	---------	----------	----------	---------	----------

Taststifte (Typ B) / Styli (Type B) Kugel: Rubin / Ball: Ruby Schaft: HM / Shaft: TC	1.5-28.7-12 NTB	9.9g	12	1.5	1.0	28.7	7.7
	1.5-40.7-12 NTB	10.0g	12	1.5	1.0	40.7	19.7
	2.0-31-12 NTB	7.3g	12	2.0	1.5	31.0	20.0
	2.0-36-12 NTB	7.5g	12	2.0	1.5	36.0	25.0
	2.0-42-12 NTB	7.6g	12	2.0	1.5	42.0	31.0
	2.0-61-12 NTB	11.3g	12	2.0	1.5	61.0	41.0
	3.0-36.5-12 NTB	8.0g	12	3.0	2.0	36.5	25.5
	3.0-51.5-12 NTB	8.8g	12	3.0	2.0	51.5	40.5
	3.5-92.7-12 NTB	15.4g	12	3.5	3.0	92.7	81.7
	4.0-57-12 NTB	11.7g	12	4.0	3.0	57.0	46.0
	4.0-82-12 NTB	12.0g	12	4.0	2.5	82.0	71.0
	5.0-62.5-12 NTB	14.3g	12	5.0	3.5	62.5	51.5
	5.0-82.5-12 NTB	17.1g	12	5.0	3.5	82.5	71.5

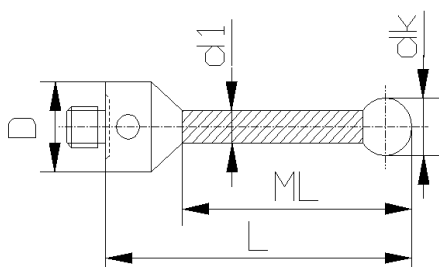


8.0-94-12 NTB	44.5g	12	8.0	6.0	94.0	78.0
8.0-129-12 NTB	59.0g	12	8.0	6.0	129.0	113.0
8.0-180-12 NTB	79.8g	12	8.0	6.0	180.0	164.0

Bestell-Nr. Order No.	Gewicht Weight	D mm	dk mm	d1 mm	L mm	ML mm
--------------------------	-------------------	---------	----------	----------	---------	----------

Taststifte (Typ K) Keramik Styli (Type K) Ceramic Kugel: Rubin / Ball: Ruby Schaft: Keramik / Shaft: Ceramic	8.0-94-12 NTKE	21.0g	12	8.0	6.0	94.0	78.0
	8.0-129-12 NTKE	25.0g	12	8.0	6.0	129.0	113.0
	15.0-97.5-12 NTKE	26.0g	12	15.0	6.0	97.5	81.5

\*\*\* Kugel: Keramik / Ball: Ceramic

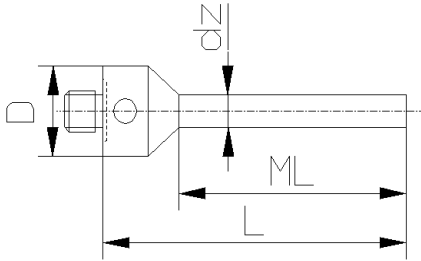


## Newton Metrology Systems

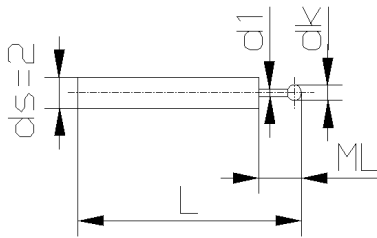
Mob : +91 73488 98009 / 73488 93121 mailto: info@newtonmetrology.in http:// www.newtonmetrology.in  
Dimensional measurement technology : Styli for coordinate measuring machines (CMM), machine tools, height gauges

# M5 (Ø 12mm)

Anschluss-Gewinde M5 / M5 thread styli	Bestell-Nr. Order No.	Gewicht Weight	D mm	dz mm	L mm	ML mm
Zylindertaststifte / Cylinder styli Zylinder: HM / Cylinder: TC	3.0-50-12 NZTH	11.3g	12	3.0	50.0	39.0
	5.0-50-12 NZTH	18.6g	12	5.0	50.0	39.0

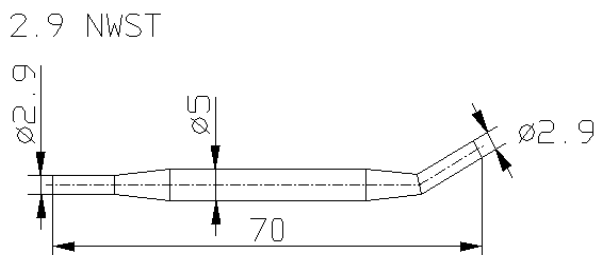


	Bestell-Nr. Order No.	Gewicht Weight	dk mm	d1 mm	L mm	ML mm
Taststifte (Typ F) / Styli (Type F) Kugel: Rubin / Ball: Ruby Schaft: HM / Shaft: TC	0.3-15.3-2 NTF	0.3g	0.3	0.2	15.3	2.5
	0.5-15.5-2 NTF	0.6g	0.5	0.3	15.5	2.5
	0.5-22.3-2 NTF	0.8g	0.5	0.3	22.3	4.3
	0.6-15.6-2 NTF	0.5g	0.6	0.4	15.6	4.5
	0.8-15.8-2 NTF	0.5g	0.8	0.6	15.8	4.5
	0.8-22.4-2 NTF	0.8g	0.8	0.6	22.4	4.4
	1.0-16-2 NTF	0.5g	1.0	0.8	16.0	4.5
	1.0-22.5-2 NTF	0.8g	1.0	0.8	22.5	4.5
	*** 1.0-34.2-2 NTF	0.6g	1.0	0.8	34.2	14.2
	1.0-34.5-2 NTF	0.6g	1.0	0.8	34.5	14.5
	1.5-22.7-2 NTF	0.7g	1.5	1.2	22.7	10.3
	1.8-46.9-2 NTF	1.2g	1.8	1.5	46.9	40.9
	*** 2.0-23-2 NTF	0.8g	2.0	1.5	23.0	10.6
	*** 4.0-34.5-2 NTF	1.8g	4.0	2.0	34.5	34.5



\*\*\* Kugel ist abgeflacht (HM-Kugel) / Ball: TC flattened

Werkzeuge für Komponenten mit Anschluss-Gewinde M5 / Tools for M5 thread components	Bestell-Nr. Order No.	Bezeichnung Description
Stiftschlüssel / Pin key	2.9 NWST	Ø 2.9mm für Komponenten mit M5 Ø 2.9mm for M5 thread components



## Newton Metrology Systems

Mob : +91 73488 98009 / 73488 93121 mailto: info@newtonmetrology.in http:// www.newtonmetrology.in  
Dimensional measurement technology : Styli for coordinate measuring machines (CMM), machine tools, height gauges

**Newton Metrology Systems**

No.171,2<sup>nd</sup> Floor,3<sup>rd</sup> Main Road  
New BDA Layout, Avalahalli  
Girinagar , Bangalore  
560085, India.

Mob. +91 73488 98009

Mob. +91 73488 93121

[info@newtonmetrology.in](mailto:info@newtonmetrology.in)

[www.newtonmetrology.in](http://www.newtonmetrology.in)

